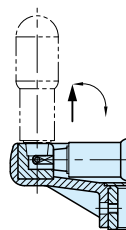
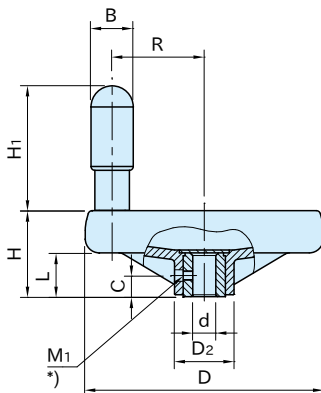


# TWN-M

## PLASTIC ANGLED-SPOKE HANDWHEELS

On Request



**TWN-M**

(With Revolving Handle)

**TWN-F-M**

(With Revolving Fold-Away Handle)

Handwheel	Hub	Center Cap	Handle
Polypropylene plastic Black matte	SUM24L steel Black oxide finish	A3104 aluminum Silver matte	Polyamide plastic Black matte

**TWN-M** (With Revolving Handle)

Part Number	D	d (H7)	H	D <sub>2</sub>	L	M <sub>1</sub>	C	B	H <sub>1</sub>	R	Weight (g)	Delivery Time
TWN 80-M	80	8	35	25	17	M4x0.7	6	15.5	45	29	104	3 Working Days **)
TWN100-M	99	10	37	25.5		M5x0.8	7	18	60	37	145	
TWN125-M	125	12	44	31	22			22	65	48	245	

**TWN-F-M** (With Revolving Fold-Away Handle)

Part Number	D	d (H7)	H	D <sub>2</sub>	L	M <sub>1</sub>	C	B	H <sub>1</sub>	R	Weight (g)	Delivery Time
TWN 80F-M	80	8	35	25	17	M4x0.7	6	15.5	45	29	102	3 Working Days **)
TWN100F-M	99	10	37	25.5		M5x0.8	7	18	60	37	163	
TWN125F-M	125	12	44	31	22			22	65	48	230	

### Note

\*) These are machined handwheels of **TWN** , **TWN-F** to add the hole for setscrew.  
For further information, please refer to the catalog pages at our website.

\*\*) Ordering 11 pcs or more, please ask us for the delivery time.

\*\*) Can not be used with **MAU3222**.

