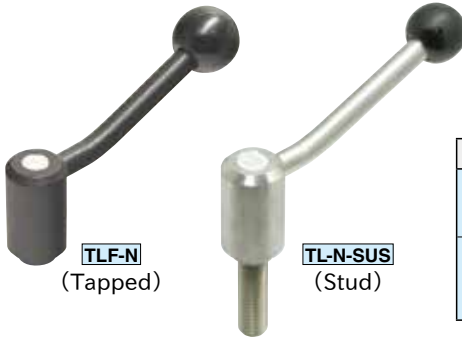


TLF-N / TL-N

ADJUSTABLE CLAMP LEVERS



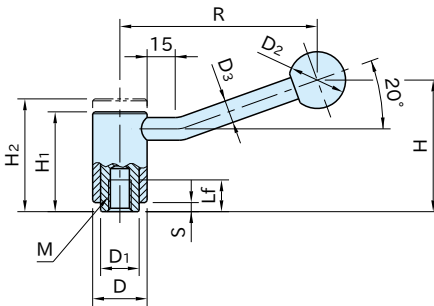
Stainless Steel



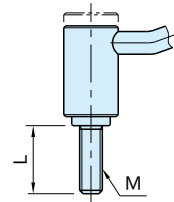
★Key Point

Long lever can generate a heavy tightening force even with a light load.

Type	Body / Lever	Locking Element	Knob
TLF-N TL-N	SUM22L steel Powder coating Black	SUM22L steel Black oxide finish	Phenolic plastic Black
TLF-N-SUS TL-N-SUS	SUS303 stainless steel	SUS303 stainless steel	



TLF-N **TLF-N-SUS**
(Tapped)



TL-N **TL-N-SUS**
(Stud)

Size	R	M	H	D	H ₁	H ₂	D ₁	D ₂	D ₃	S	Teeth
TLF-N TL-N	8	M 8×1.25	58.5	24	44.5	49.5	16	25	10	4.5	22
	10	M10×1.5									
TLF-N-SUS	12	M12×1.75	68.5	28	51.5	57.5	19	32	12	5.5	24
TL-N-SUS	16	M16×2	81	33	58	65	23		13	6	26
		M20×2.5	89.5	41	68.5	76.5	30			7.5	36

How To Use



Lift the handle to disengage the teeth from the locking element.



Turn the lifted handle to a desired position.



When the handle is released, the return spring automatically engages the teeth again for further tightening.

TLF-N **TLF-N-SUS** (Tapped)

Steel Locking Element	Stainless-Steel Locking Element	Lf	Weight (g)
Part Number	Part Number		
TLF 8N	-	14	179
TLF10N	TLF10N-SUS		170
TLF12N	TLF12N-SUS	17	260
TLF16N	TLF16N-SUS	23	400
TLF20N	TLF20N-SUS	27	670

TL-N **TL-N-SUS** (Stud)

Steel Locking Element	Stainless-Steel Locking Element	L	Weight (g)
Part Number	Part Number		
TL 8×20N	-	20	196
TL 8×30N	-	30	197
TL 8×40N	-	40	206
TL10×30N	TL10×30N-SUS	30	180
TL10×40N	TL10×40N-SUS	40	190
TL10×50N	TL10×50N-SUS	50	205
TL12×30N	TL12×30N-SUS	30	295
TL12×40N	TL12×40N-SUS	40	300
TL12×50N	TL12×50N-SUS	50	310
TL12×60N	TL12×60N-SUS	60	320
TL16×30N	TL16×30N-SUS	30	460
TL16×40N	TL16×40N-SUS	40	470
TL16×50N	TL16×50N-SUS	50	485
TL16×60N	TL16×60N-SUS	60	500
TL20×40N	TL20×40N-SUS	40	850
TL20×60N	TL20×60N-SUS	60	895
TL20×80N	TL20×80N-SUS	80 *)	935

*) The effective thread length is 60mm.

Feature

The large thread size and long lever can generate a heavy tightening force even with a light load.

Technical Information

■ Tightening Capacity

Type/Size	TL-N TL-N-SUS				
	8	10	12	16	20
Thread Diameter	M8	M10	M12	M16	M20
Turning Radius (mm)	88	88	106	128.5	128.5
Load Capacity (N)	170	300	420	670	1080
Allowable Tightening Force (kN)	8	12.8	18.6	33.5	52.3

