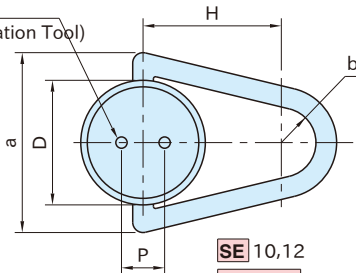
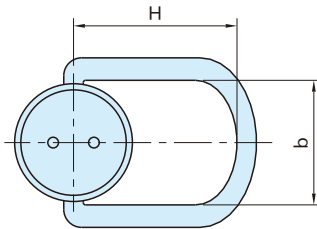
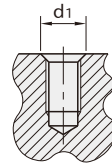
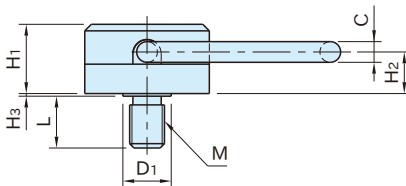


**SE****SWIVEL EYEBOLTS****RHS SUS****Jergens****SE** 10,12**SE-SUS** 10,12**SE-SUS** 16,20

Type	Body
<b>SE</b>	Steel(SCM440) Black oxide finish
<b>SE-SUS</b>	Stainless steel(SUS316) Passivated

2-φ5

(For Installation Tool)

**SE** 10,12**SE-SUS** 10,12**SE** 16,20**SE-SUS** 16,20

Max. C'sink Dia.

Safety Factor 5:1

Size	M	L	a	H	C	D	b	H <sub>1</sub>	H <sub>2</sub>	H <sub>3</sub>	D <sub>1</sub>	P	d <sub>1</sub> <sup>*)</sup> max.	Installation Tool Part Number
<b>SE</b>	<b>10</b>	M10×1.5	14.6	66.7	50.8	7.9	44.5	12.7	27.8	17.9	1.2	19.1	16.3	SE1T
	<b>12</b>	M12×1.75	19.1										13	
<b>SE-SUS</b>	<b>16</b>	M16×2	23.8	97	93	12.7	63.5	70	38.5	22.6	0.8	25.4	23.1	SE3T
	<b>20</b>	M20×2.5	30.2										19	
													22	

**SE** (Steel)

Part Number	Allowable Load (kN)	Weight (kg)
<b>SE10</b>	5	0.42
<b>SE12</b>	7	0.43
<b>SE16</b>	15	0.8
<b>SE20</b>	20	1.39

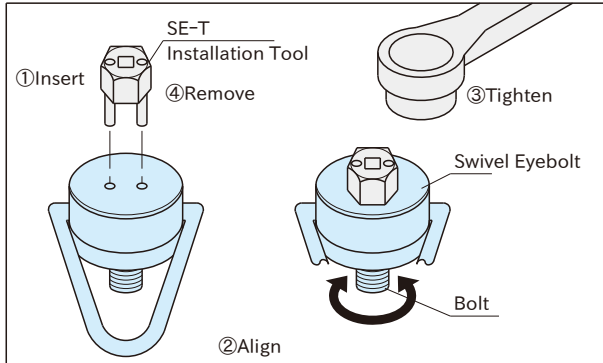
**SE-SUS** (Stainless Steel)

Part Number	Allowable Load (kN)	Weight (kg)
<b>SE10-SUS</b>	2.5	0.42
<b>SE12-SUS</b>	3.5	0.43
<b>SE16-SUS</b>	7.5	0.8
<b>SE20-SUS</b>	10	1.39

\*) The mounting-hole countersink diameter should not exceed "d1" dimension to prevent binding.

## How To Use

### How To Install



- 1 Insert the Installation Tool pins into the holes in the top element of a Swivel Eyebolt.
- 2 Turn the bolt until the pins drop into place.
- 3 Tighten to the recommended torque with a wrench.
- 4 Remove the Installation Tool

### Features

- Tamper resistant design is ideal for permanent mounting on OEM appliances, moulds, dies or fixtures.
- Economical lifting device that allows lifting a weight safely with full(360°) and pivot( 180°) action.
- The rated load capacity value is stamped on the body top.
- Stated load capacity is effective to lifting in all directions.

### Note

The allowable load capacity value is stamped on the body top.

### Reference

**SE-T** Installation Tool

### Technical Information

Heat resistance : Max. 204°C

Size	Recommended Torque (N·m)
<b>10</b>	10
<b>SE 12</b>	25
<b>SE-SUS 16</b>	50
<b>20</b>	80