

# SDP-04

# DIGITAL POSITION INDICATORS



**SDP-04H**

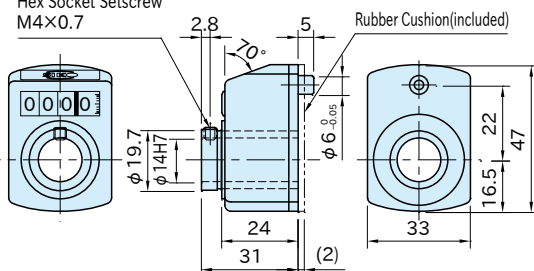


**SDP-04F**



**SDP-04V**

Hex Socket Setscrew  
M4×0.7



## Housing

Polyamide (nylon6) plastic  
Orange

## Feature

- Easy to read the feed amount of Mechanical Linear Actuator.
- Display figure height : 6mm

## Supplied With

One rubber cushion

## Technical Information

Working temperature : Between 0°C and 80°C

## Reference

Please refer to another [SDP-04](#) page for further information at our website.

## Note

- Ensure that the start-up revolution speed is 1/3 or less of the allowable revolution speed.
- Do not give rapid acceleration or sudden stop.
- These position indicators can not be used in applications where the shaft moves in axial direction.
- Can not be used with [MAU3222\\*](#).

## Window Position

Style H	Style F	Style V
To install on shaft at lower eye level	Window is visual at eye level	Install on vertical shaft

## Rotative Direction

R	L
CW Forward Counting CCW Backward Counting	CCW Forward Counting CW Backward Counting

## Display Example

Yellow Line indicates decimal point.	Count up from "0000".	Count down from "0000".

Type	Window Style	Rotative Direction	Spindle Thread Pitch Per Rotation	Allowable Rotation Speed (min <sup>-1</sup> )	Weight (g)	Proper Mechanical Linear Actuators *)
SDP-04	H	R	3B 0030 **)	500	50	MAU5040*S MAG5040*S
	F V	L	6B 0060 ***)	250		MAU5040*W MAG5040*W

\*)Mechanical Linear Actuator uses Tr14x3 Trapezoidal Thread (Pitch 3mm).

\*\*)MAU5040\*S · MAG5040\*S Carriage moves 3mm per rotation of the Handle Shaft.

\*\*\*)MAU5040\*W · MAG5040\*W Pitch between two carriages increases or decreases 6mm per rotation of the shaft.

Ordering Example

**SDP-04    H    L    -    3B**

Window  
Style

Rotative  
Direction

Spindle Thread Pitch  
After 1st Revolution

#### How To Install

φ 6 Mounting Hole for  
Digital Position Indicator

22

Handle Shaft

End Plate

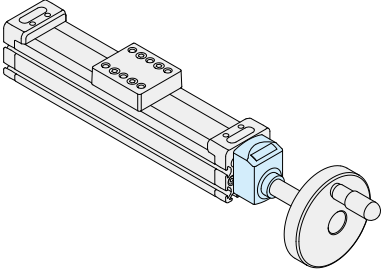
Rubber Cushion

Hex. Socket Setscrew

Stick the rubber cushion to the back of the indicator,  
slide the indicator onto the shaft to the end plate.  
Then tighten the included setscrew.

#### How To Use

##### ■ Install on Mechanical Linear Actuator



##### ■ Install on Adjustable Gearbox of Mechanical Linear Actuator

