

QCSJ**SHAFT COUPLING CLAMP**

Heat resistance: 180°C

IMAO★ **Key Point**

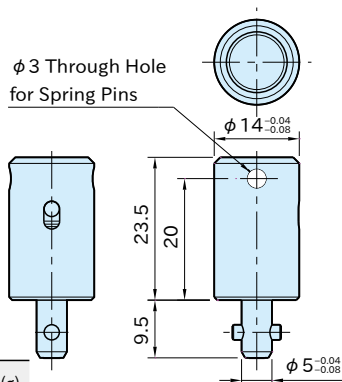
Multipurpose coupling element

Part Number	Clamping Force(N)	Holding Force(N*)	Weight(g)
QCSJ0514A	90	90	25

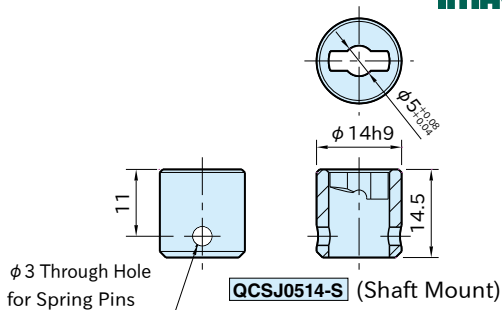
*) Exceeding the holding force creates a gap of greater than 0.1mm between plates.

Note

Spring pins are not supplied.

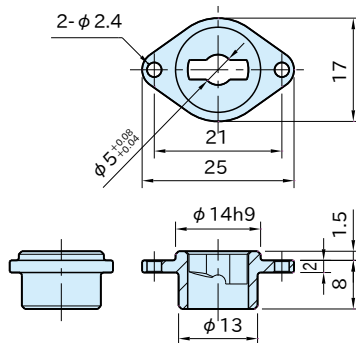


Body/Shank	Pin	Spring
S45C steel Electroless nickel plated	SUS304 stainless steel	Equivalent to SWOSC-V steel

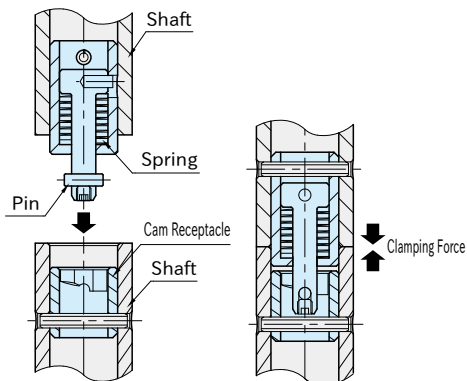
QCSJ-S / QCSJ-B**CAM RECEPTACLES****IMAO****QCSJ0514-S**
(Shaft Mount)**QCSJ0514-B**
(Plate Mount)

Body
SCM440 steel Quenched and tempered Electroless nickel plated

Part Number	Weight(g)
QCSJ0514-S	10
QCSJ0514-B	8

Supplied With**QCSJ0514-B**: 2 of socket-head cap screws (stainless steel), M2×0.4-5L **Note**Spring pins to mount **QCSJ0514-S** are not supplied.**QCSJ0514-B** (Plate Mount)

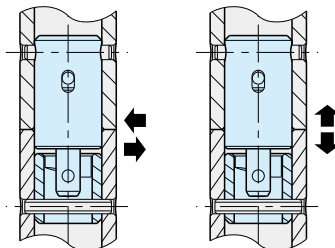
Feature



When the pin contacts along the cam surface in Cam Receptacle, the spring gets compressed to clamp the shafts.

Mechanical Strength

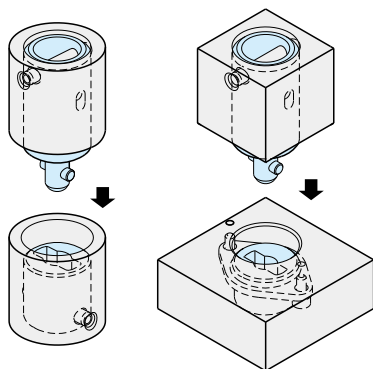
Heatresistant Temperature 180°C



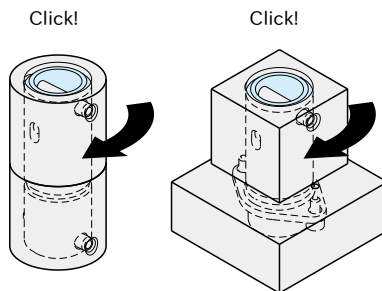
Shear Strength 1800N Tensile Strength 1200N

Shear and tensile strength is allowable load and the fastener could break when it receives bigger load.

How To Use



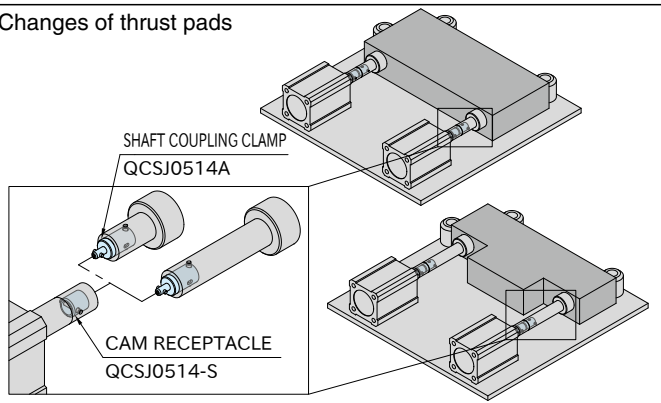
1. Insert the shaft into the keyway of Cam Receptacle.



2. Turn the shaft or block for 90° to clamp. The element clicks when clamped. For unclamping, follow back these steps.

Application Example

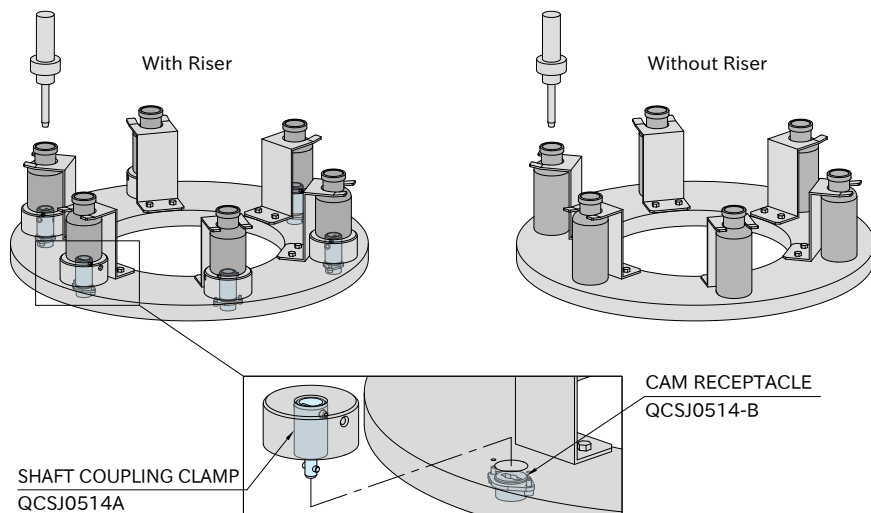
Changes of thrust pads



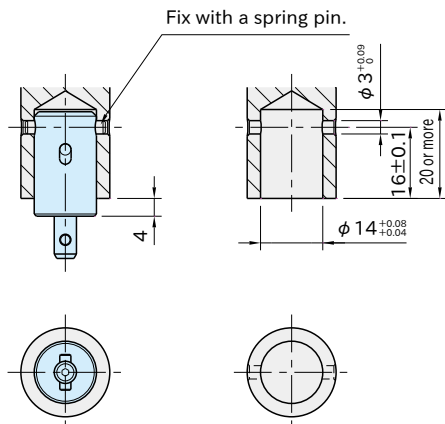
Continuing on
Next Page

Application Example

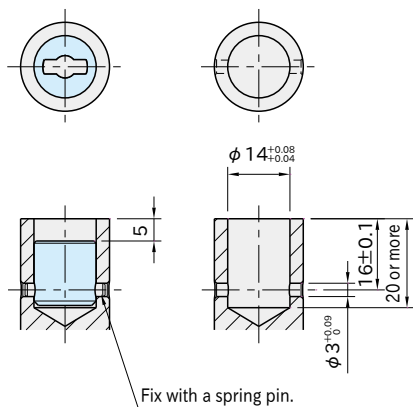
Changes of riser



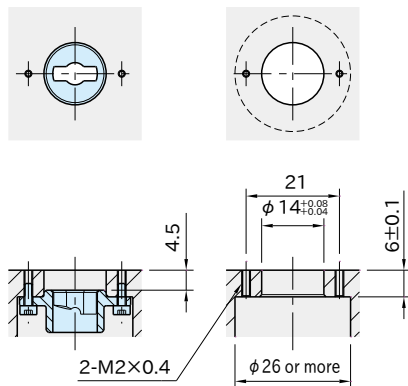
How To Install Shaft Coupling Clamp



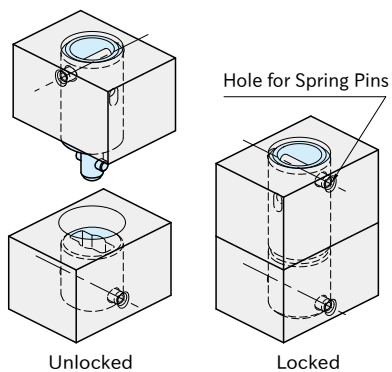
How To Install Cam Receptacle(Shaft Mount)



How To Install Cam Receptacle(Plate Mount)



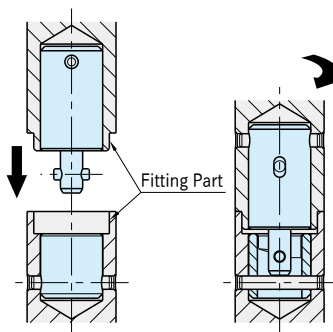
Note



Pay attention to the direction of holes for spring pins.

Repeatability

Repeatability ± 0.08



Prepare male and female fittings for higher accurate locating.