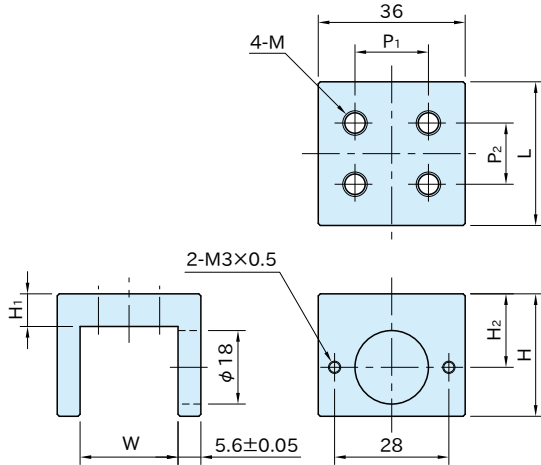
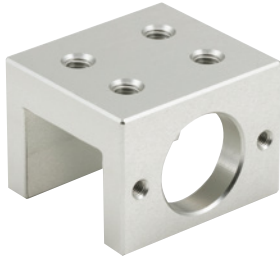


QCPSLA

LINEAR RAIL CLAMP MOUNTS



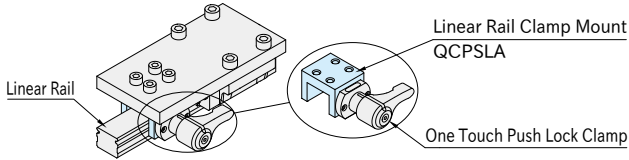
Body
A5052 aluminum alloy Anodized

Part Number	Linear Rail Size	W (±0.05)	H ₁	L	H	H ₂	P ₁	P ₂	M	Weight (g)
QCPSLA1036-12	12	13	4	24.2	24	12	16	8	M3×0.5	27
QCPSLA1036-15A	15	16	5	27.2				10	M4×0.7	29
QCPSLA1036-15B						28	16		34	
QCPSLA1036-20	20	21	8	32.2	26	14	18	13	M5×0.8	39
QCPSLA1036-25A	25	24		35.2	30	18		15	M6×1	46
QCPSLA1036-25B						35	23		62	
QCPSLA1036-30	30	29	13	40.2	35	23	22	18	M8×1.25	65
QCPSLA1036-35A	35	35	15	46.2	37	25		24		81
QCPSLA1036-35B					22	49	32		115	

Part Number	One Touch Push Lock Clamps
QCPSLA1036-12	QCPS1036-6-OG-F QCPS1036-6-BK-F QCPS1036-6-OG-D QCPS1036-6-BK-D QCPS1036-6-S-F QCPS1036-6-S-D
QCPSLA1036-15A	
QCPSLA1036-15B	
QCPSLA1036-20	
QCPSLA1036-25A	
QCPSLA1036-25B	
QCPSLA1036-30	
QCPSLA1036-35A	
QCPSLA1036-35B	

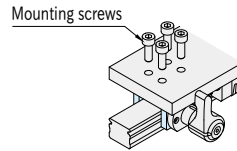
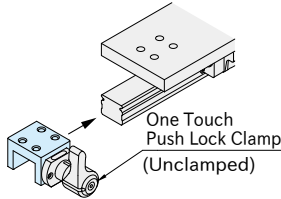
How To Use

Use with [QCPSL](#) One Touch Push Lock Clamps for clamping linear rails.

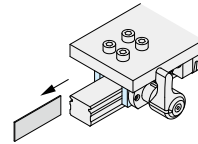
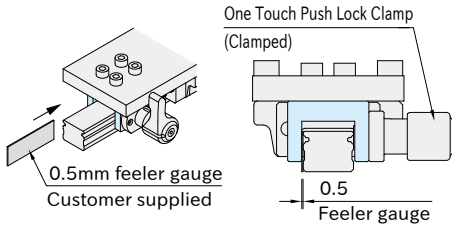


How to Install

1. Mount the One Touch Push Lock Clamp onto the Linear Rail Clamp Mount, then slide the assembly to the desired mounting position.
2. Loosely tighten the mounting screws so that the Linear Rail Clamp Mount can be adjusted.



3. To ensure equal clearance on both sides, insert a 0.5 mm feeler gauge between the linear rail and the Linear Rail Clamp Mount on the side opposite the clamp. With the gauge in place, set the clamp to the clamped position.
4. After fully tightening the mounting screws, unclamp the One Touch Push Lock Clamp and remove the feeler gauge.



Applicable Linear Guides

Manufacturer	Type
THK	SHS SHS-C / SHS-LC, SHS-V / SHS-LV, SHS-R / SHS-LR (**)
	SSR SSR-XW / SSR-XWM, SSR-XV / SSR-XVM, SSR-XTB
	HSR HSR-A / HSR-AM / HSR-LA / HSR-LAM, HSR-B / HSR-BM / HSR-LB / HSR-LBM, HSR-CA / HSR-CAM / HSR-HA / HSR-HAM, HSR-CB / HSR-CBM / HSR-HB / HSR-HBM, HSR-R / HSR-RM / HSR-LR / HSR-LRM (**), HSR-YR / HSR-YRM (**)
	SR SR-W / SR-WM / SR-V / SR-VM, SR-TB / SR-TBM / SR-SB / SR-SBM
IKO	LWE LWEC / LWE / LWEG / LWEC...SL / LWE...SL / LWEG...SL, LWE...Q
	LWET LWETC / LWET / LWETG / LWETC...SL / LWET...SL / LWETG...SL, LWET...Q
	LWES LWESC / LWES / LWESG / LWESC...SL / LWES...SL / LWESG...SL, LWES...Q
	LWH LWH...B / LWHG / LWH...SL / LWH...M
	LWHT LWHT...B / LWHTG / LWHT...SL / LWHT...M
LWHS LWHS...B / LWHSG / LWHS...SL / LWHS...M	

*) For use with linear guides other than those listed above, please contact us.

**) Linear Rail Clamp Mounts are not products of linear guide manufacturers. Linear guide manufacturers assume no responsibility and provide no warranty for any problems resulting from the use of Linear Rail Clamp Mounts.

**) Use [QCPSLA-B](#) for the following types:

SHS-R / SHS-LR, HSR-R / HSR-RM / HSR-LR / HSR-LRM, HSR-YR / HSR-YRM