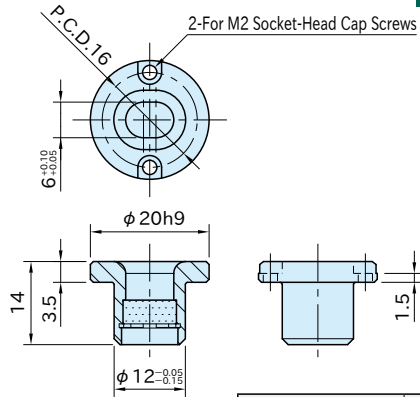


# QCMA-SH

# MAGNET-LOCK SLOTTED RECEPTACLES



Stainless Steel



## ★Key Point

Work with rough mounting hole spacing

Body	Magnet
SUS303 stainless steel	Neodymium

Part Number	Plate Thickness	Clamping Force (N)	Weight (g)	Magnet-Lock Clamping Pins
<b>QCMA0612A-SH</b>	8 or more	7	13	<b>QCMA0612-M4</b>

## Supplied With

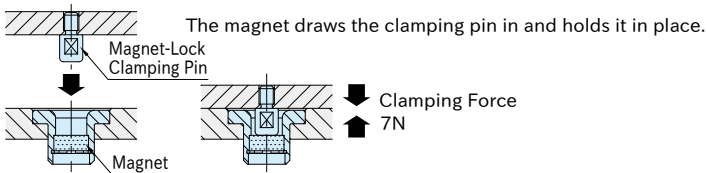
2 of socket-head cap screws(stainless steel), M2X0.4-5L

## QCMA-M

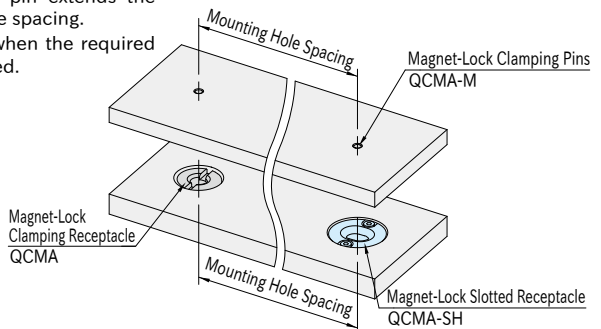
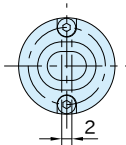
## MAGNET-LOCK CLAMPING PINS



## Feature



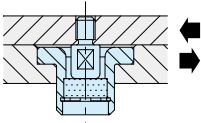
The slotted hole for the clamping pin extends the tolerance range of the mounting hole spacing. This allows secure mounting even when the required spacing tolerance cannot be achieved.



## Mechanical Strength

Heatresistant Temperature 80°C

Shear Strength at Failure 900N



The values shown represent load levels at which failure can occur.

## Note

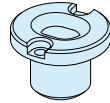
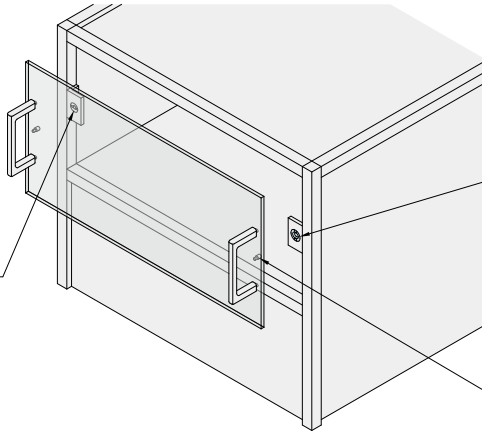
Use this product in pairs with a **QCMA-M** receptacle for use with two **QCMA** clamping pins.

## Application Example

Installation/removal of maintenance cover plate of machines



MAGNET-LOCK  
CLAMPING RECEPTACLE  
QCMA0612A

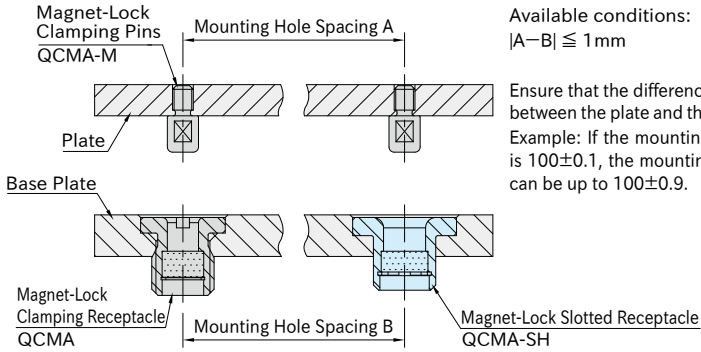


MAGNET-LOCK  
SLOTTED RECEPTACLE  
QCMA0612A-SH



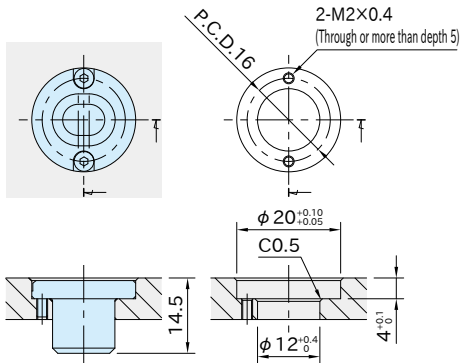
MAGNET-LOCK  
CLAMPING PINS  
QCMA0612-M4

## How To Set Mounting Hole Spacing



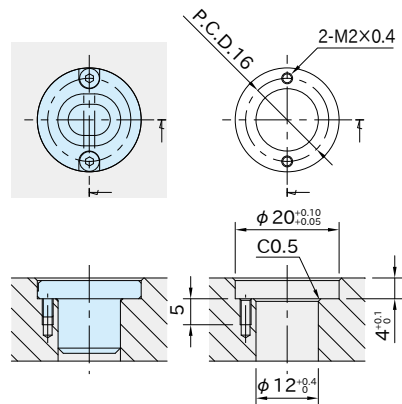
## How To Install

For over 8 mm to 15 mm plate



With thin plates, the bottom of the receptacle protrudes from the plate.

For over 15 mm plate



## Accuracy

Repeatability is in accordance with the [QCMA](#) receptacle used.

## Reference

- "How To Install Magnet-Lock Clamping Pins" of [QCMA-M](#) Magnet-Lock Clamping Pins
- [QCMA](#) MAGNET-LOCK CLAMPING RECEPTACLES