

# QCBU / QCBUS BUTTON-LOCKING PINS



Stainless Steel

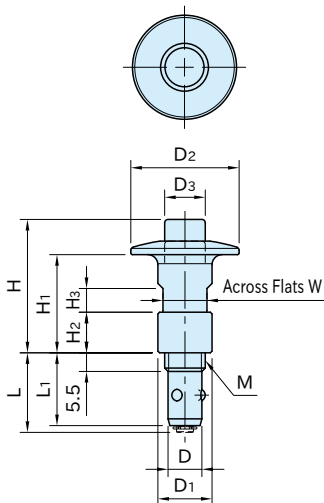
Heat resistance: 180°C



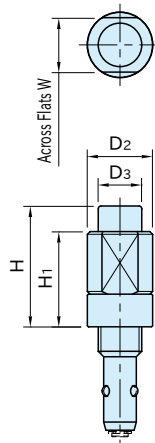
**QCBU-SUS**



**QCBUS-SUS**  
(Cylindrical)



**QCBU-SUS**



**QCBUS-SUS**  
(Cylindrical)

## ★Key Point

Secure clamping with wedge

Part Number	Body	Button	Ball	Coiled Spring	Snap Ring
<b>QCBU-SUS</b>	<b>0608-10</b>	SUS303	SUS420J2stainlesssteel	SUS440C stainless steel	SUS304WPB
<b>QCBUS-SUS</b>	<b>1012-16</b>	stainless steel	Electrolessnickel plated Quenched and tempered	Quenched and tempered	stainless steel

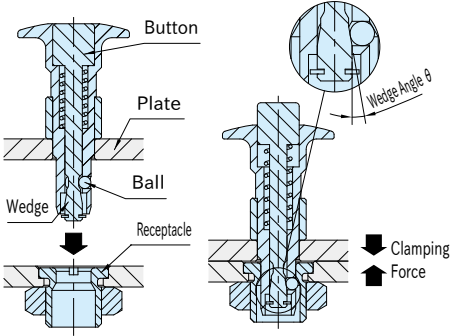
Part Number	Plate Thickness	D (-0.05 -0.16)	M	D <sub>1</sub>	L	L <sub>1</sub>	H <sub>2</sub>	W	Clamping Force(N)	Holding Force (N *)	
<b>QCBU-SUS</b>	<b>0608-10</b>	6~10	6	M 8X1.25	12	21.4	19	6	10	30	90
<b>QCBUS-SUS</b>	<b>1012-16</b>	6~16	10	M12X1.5 (Fine Thread)	16	23.5	21.5	12	13	50	150

\*) Exceeding the holding force creates a gap of greater than 0.1mm between plates.

Part Number	Receptacles	Floating Receptacles
<b>QCBU-SUS</b>	<b>0608-10</b>	QCBU0608-M12SUS
<b>QCBUS-SUS</b>	<b>1012-16</b>	QCBU1012-M16SUS
		QCBU0608-FL-SUS
		QCBU1012-FL-SUS

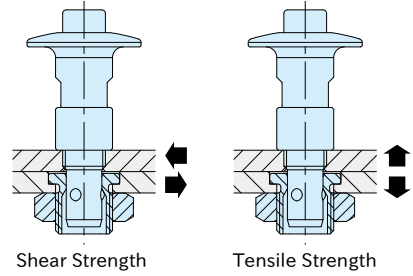
<b>QCBU-SUS</b>						<b>QCBUS-SUS</b> (Cylindrical)							
Part Number	D <sub>2</sub>	D <sub>3</sub>	H	H <sub>1</sub>	H <sub>3</sub>	Weight (g)	Part Number	D <sub>2</sub>	D <sub>3</sub>	H	H <sub>1</sub>	H <sub>3</sub>	Weight (g)
<b>QCBU0608-10-SUS</b>	23	8	26	18	5.5	30	<b>QCBUS0608-10SUS</b>	12	8	22.4	17.5	11.5	30
<b>QCBU1012-16-SUS</b>	32	12	39.5	29	7	75	<b>QCBUS1012-16SUS</b>	16	11	34.5	28	16	50

## Feature



The wedge of the locking pin pushes out the balls against the tapered surface of the receptacle to clamp the two plates.

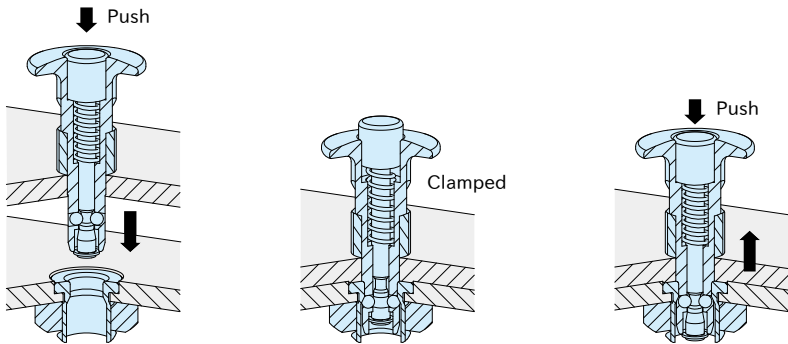
## Mechanical Strength



Part Number		Heatresistant Temperature (C)	Shear Strength at Failure(N)	Tensile Strength at Failure(N)
QCBU-SUS	0608-10	180	3000	500
QCBUS-SUS	1012-16		9000	1500

The values shown represent load levels at which failure can occur.

## How To Use



1.Insert the pin pressing the button.

2.When the button is released,plates are clamped.

3.For removal, pull out the pin pressing the button.

### QCBU-M

### BALL-LOCK RECEPTACLES



### QCBU-FL

### FLOATING RECEPTACLES

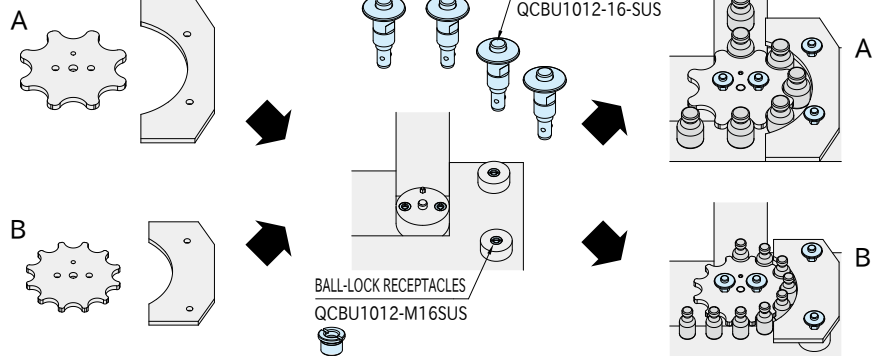


## Note

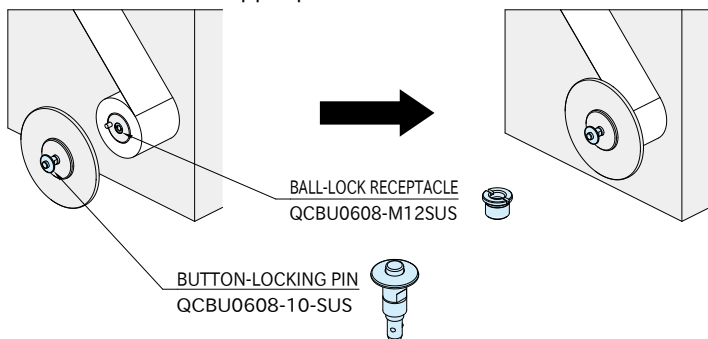
For cylindrical [QCBUS-SUS](#) Button-Locking Pins, prepare handles or knobs separately to facilitate the operation.

## Application Example

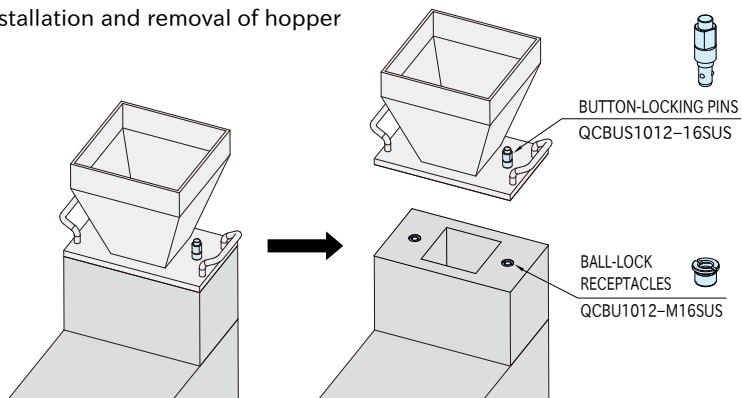
### Changes of star wheels and guide plates



### Installation and removal of stopper plate for rolls

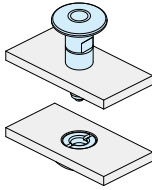


### Installation and removal of hopper



## How To Install

### Fixed Installation



Part Number	Plate Thickness	Figure	M	d <sub>2</sub>
<b>QCBU-SUS</b>	6	A	M 8×1.25	—
	Over 6, 10 or less	B		13
<b>QCBUS-SUS</b>	6	A	M12×1.5 (Fine Thread)	—
	Over 6, 16 or less	B		17

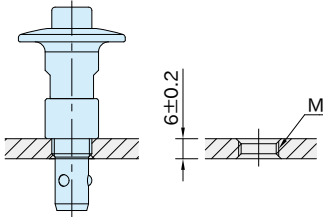


Figure A

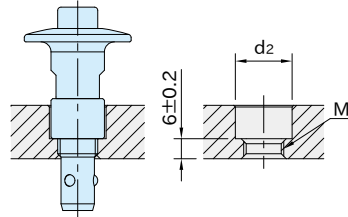
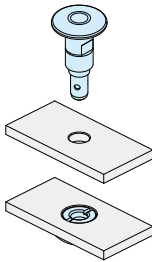


Figure B

### Unfixed Installation for **QCBU-SUS** type



Part Number	Plate Thickness	Figure	d <sub>1</sub> ( $\begin{smallmatrix} +0.1 \\ 0 \end{smallmatrix}$ )	d <sub>2</sub>
<b>QCBU0608-10-SUS</b>	6	C	8	—
	Over 6, 10 or less	D		13
<b>QCBU1012-16-SUS</b>	6	C	12	—
	Over 6, 16 or less	D		17

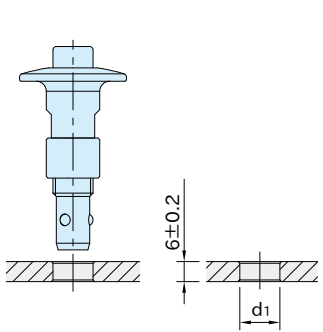


Figure C

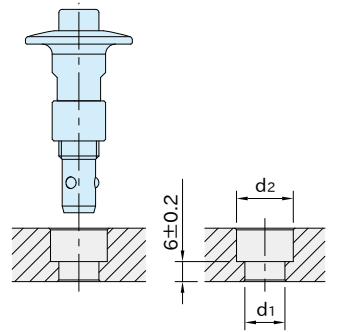
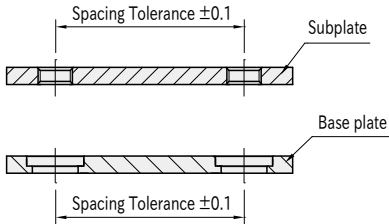


Figure D

## Accuracy

### ■ Machining Accuracy



Spacing tolerance on both the subplate and the base plate should be  $\pm 0.1$ .

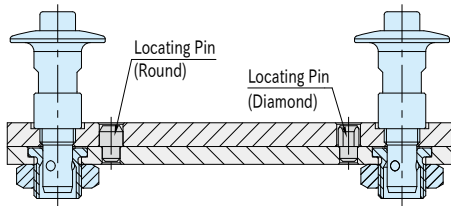
Note: To expand the tolerance range of mounting hole spacing, use [QCBU-FL](#) floating receptacles. See [QCBU-FL](#) Floating Receptacles product pages for details.

## Reference

"How To Install" of [QCBU-M](#) Ball-Lock Receptacles and [QCBU-FL](#) Floating Receptacles

### ■ Repeatability

Repeatability is  $\pm 0.25$  for both fixed and unfixed installations.



For higher accurate locating, use locating pins.