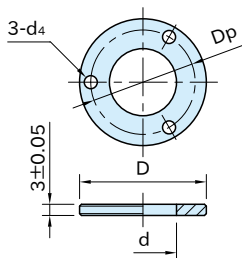


# QCASP

# SPACERS



Stainless Steel



### ★ Key Point

Allow quarter-turn clamps to be mounted on 3mm plate.

Body
SUS303 stainless steel

Part Number	D	d ( $^{+0.1}$ <sub>0</sub> )	Dp	d <sub>4</sub>	Weight (g)
<b>QCASP25-03-SUS</b>	25	14	21	2.3	8
<b>QCASP34-03-SUS</b>	34	18	28	3.5	15.5

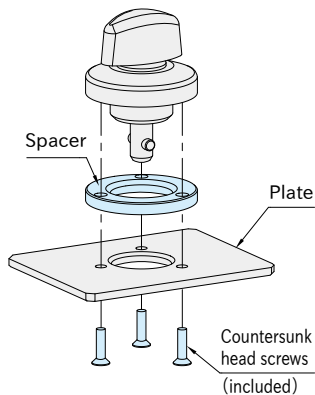
### Supplied With

- **QCASP25-03-SUS:**  
3 of countersunk head screws(stainless steel), M2x0.4-8L
- **QCASP34-03-SUS:**  
3 of countersunk head screws(stainless steel), M2x0.5-9L

### Note:

To mount the spacer, use the included countersunk head screws.

### How To Use



## How To Install

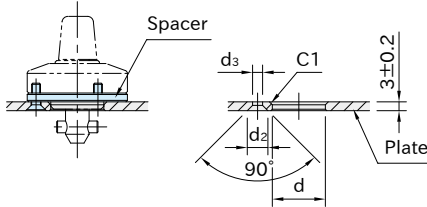
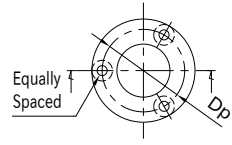
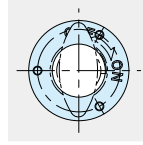
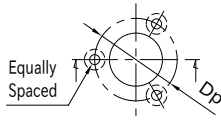
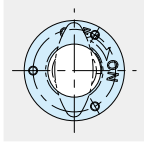


Figure A

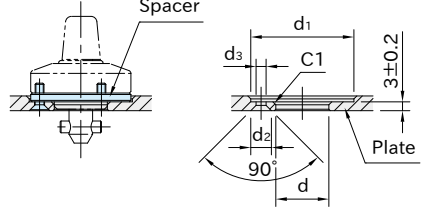


Figure B

Part Number	Plate Thickness	Figure	d ( <sup>+0.10</sup> / <sub>+0.05</sub> )	d <sub>1</sub>	T* (±0.2)	d <sub>2</sub>	d <sub>3</sub>	D <sub>p</sub>
<b>QCASP25-03-SUS</b>	3	A	14	—	3	5	2.4	21
	Over 3, under 6	B		26				
<b>QCASP34-03-SUS</b>	3	A	18	—				
	Over 3, under 6	B		35		7	3.4	28

Part Number	Quarter-Turn Clamps		Retractable Quarter-Turn Clamps		Heavy Duty Quarter-Turn Clamps	
<b>QCASP25-03-SUS</b>	<b>QCTH</b>	0525-10	<b>QCTHA</b>	0525-10	<b>QCTHS</b>	0825-20
	<b>QCTH-SUS</b>					
<b>QCASP34-03-SUS</b>	<b>QCTHL-SUS</b>	0834-14	<b>QCTHA-SUS</b>	0834-14	<b>QCTHS-S</b>	0834-20
	<b>QCTHH-SUS</b>					

Part Number	Pin Holding Clamps		Heavy Duty Pin Holding Clamps	
<b>QCASP25-03-SUS</b>	<b>QCPC</b>	0625-10	<b>QCPCS</b>	0625-20
<b>QCASP34-03-SUS</b>	<b>QCPC-SUS</b>	0834-14	<b>QCPCS-SUS</b>	0834-20

Part Number	Knob-Locking Pins		Retractable Knob-Locking Pins	
<b>QCASP25-03-SUS</b>	<b>QCWE</b>	0625-10	<b>QCWEA-SUS</b>	0625-10
<b>QCASP34-03-SUS</b>	<b>QCWE-SUS</b>	1034-14		1034-14

Note: Combining **QCWE**/**QCWE-SUS**/**QCWEA-SUS** with Position Sensor Receptacles **QCWE-M-S** & Spacers **QCASP** requires a tolerance of ±0.05 for dimension T to ensure stable sensor operation.