

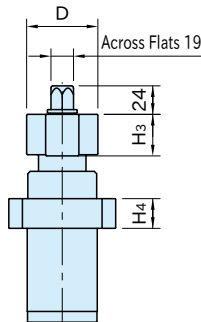
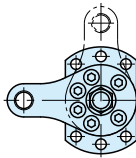


★Key Point

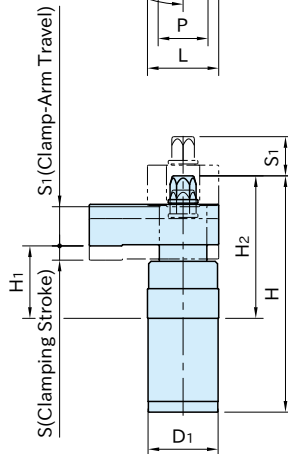
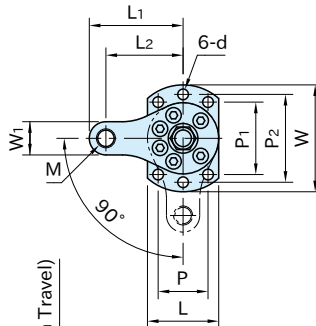
Excellent rigidity by embedding to the plate

Body	Shaft	Hex. Head	Clamp Arm
S45C steel Black oxide finished	SCM440 steel Quenched and tempered Black oxide finished	SCM435 steel Quenched and tempered Black oxide finished	S45C steel Quenched and tempered Black oxide finished

Counterclockwise Clamping



Clockwise Clamping



Part Number	Clamping Direction	H ₁	S (Clamping Stroke)	S ₁ (Clamp-Arm Travel)	M	L ₂	L ₁	W	L	D ₁ (-0.1 -0.3)	H ₄	d	P
PTSW3-12R	CW	50	10	25	M12×1.75	55	66	70	50	49	20	6.6	38
PTSW3-12L	CCW												
PTSW3-16R	CW	61	12	33	M16×2	65	79	90	60	59	25	9	42
PTSW3-16L	CCW												

Part Number	P ₁	P ₂	D	H	H ₂	W ₁	H ₃	Clamping Force (kN) *	Allowable Tightening Torque (N·m) *	Weight (kg)
PTSW3-12R	44	58	50	168	104	22	30	6	25	2.3
PTSW3-12L										
PTSW3-16R	61	74	60	199	120	28	35	10	35	4.1
PTSW3-16L										

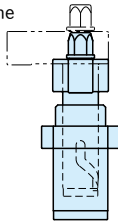
*) To operate with an impact wrench, use less than 50% of the clamping force and allowable tightening torque. If this product is operated with a nut runner and the nut is turned to the stop on the unclamping side, the tightening torque should be 50% or less of the allowable tightening torque.

Note: The clamp arm can be replaced with a custom one of your own design.

Contact us for the dimensions of its mounting section. Note that the clamping force with the custom clamp arm may increase or decrease from the values above.

Feature

The inside spiral groove allows the clamp arm to swing positively.



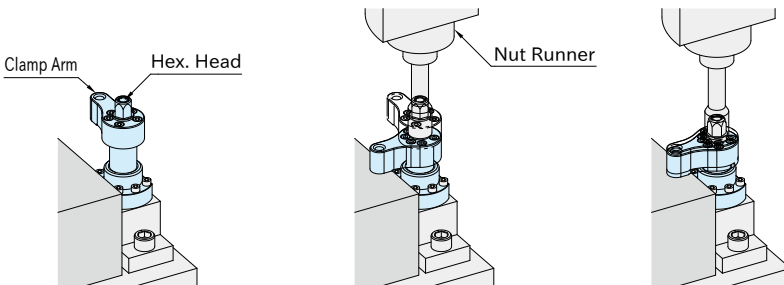
Note

This clamp can be operated with an impact wrench. Use an impact wrench that can set the torque, as the clamp may be damaged if it is used with the tightening torque exceeding the allowable value for a long period of time.

How To Use

Ideal for use with a nut runner for automated production line.

■ **Operation of CCW Type** ※The swing direction of CW type is opposite.



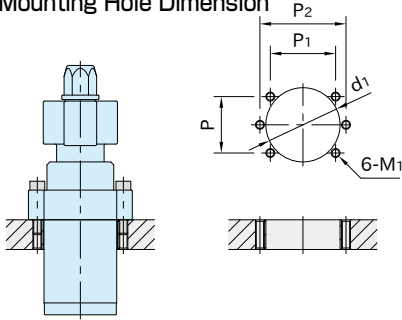
1. Unclamping
Load a workpiece.

2. Travelling
Turn the hex. head with the nut runner and the clamp arm swings to the clamping position.

3. Clamping
The clamp arm moves down vertically for clamping. Secure clamping can be done in a few seconds with the nut runner.

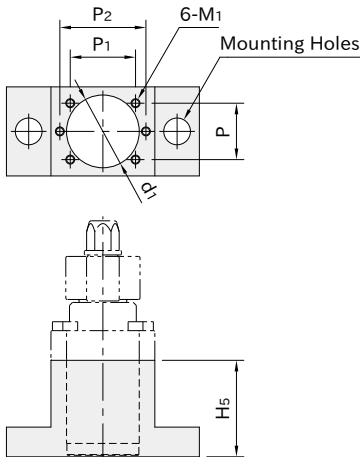
How To Install

Mounting Hole Dimension



Part Number	d_1 ($^{+0.1}$ $_0$)	M ₁	P	P ₁	P ₂
PTSW3-12	49	M6×1	38	44	58
PTSW3-16	59	M8×1.25	42	61	74

Custom Holder Dimension



Part Number	d_1 ($^{+0.1}$ $_0$)	H ₅	M ₁	P	P ₁	P ₂
PTSW3-12	49	65 or more	M6×1	38	44	58
PTSW3-16	59	80 or more	M8×1.25	42	61	74

Recommended Screw Size for Custom Holder

PTSW3-12: 2 pcs. of M12

PTSW3-16: 2 pcs. of M16