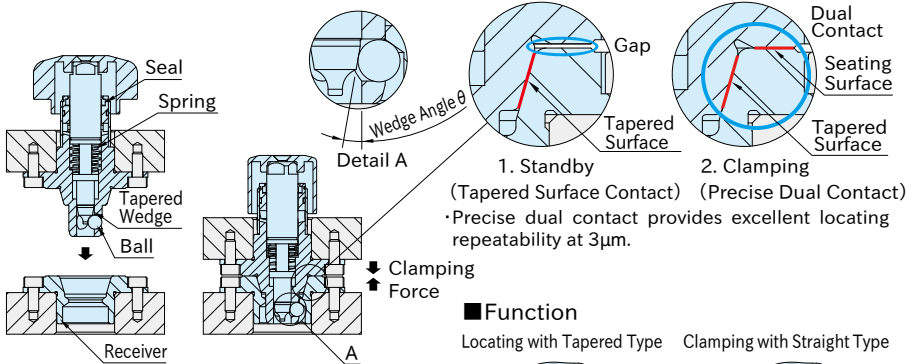


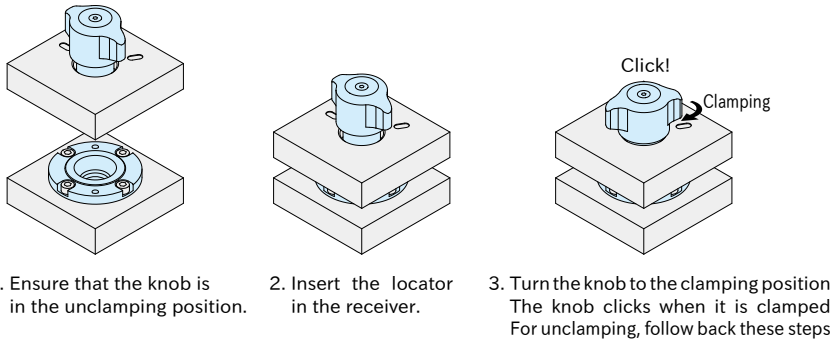
How To Use PRECISION ONE-TOUCH CLAMPING LOCATORS

Feature



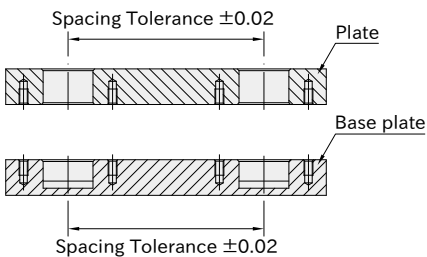
- Positioning is achieved through the tapered fit between the pin and receiver.
 - The wedge of the locator pushes out the balls against the tapered surface of the receiver to clamp the two plates.
 - Provides constant clamping force with mechanical positive locking and spring force.
- Note: CP741-1660S does not have locating function.

How To Operate



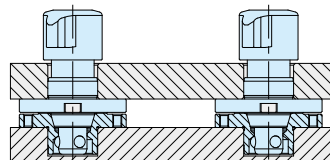
Accuracy

■ Machining Accuracy



■ Repeatability

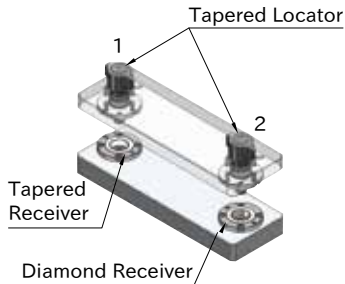
Repeatability $3\mu\text{m}$



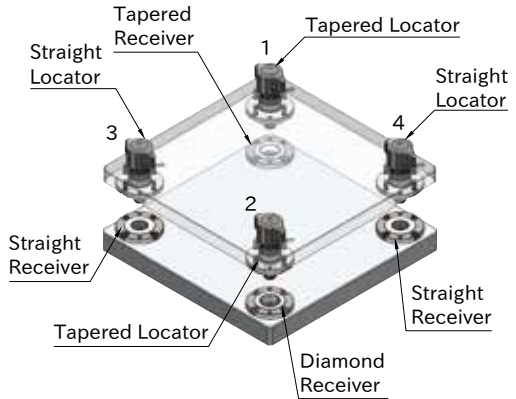
Tightening Order

1. Ensure the knob is in the unclamping position and lower the plate.
2. Turn the knobs to the clamping position in the order of 1→2→3→4 and clamp them.

Use of 2 Locators



Use of 4 Locators



Note: Do not use the knobs to lift or lower the plate.

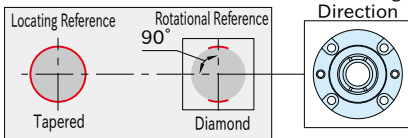
How To Use

Layout of Receivers

Mount the tapered receiver and diamond receiver as shown in the figure below.

The orientation of the diamond receivers changes between 2-point and 4-point clamping to ensure proper rotational positioning.

Use of 2 Locators



Use of 4 Locators

