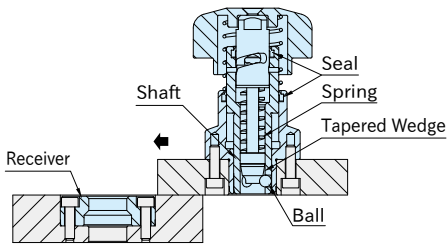
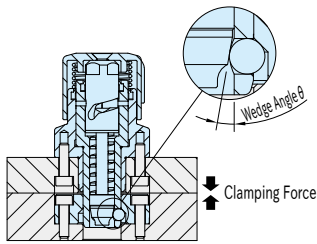


# How To Use RETRACTABLE ONE-TOUCH CLAMPING LOCATORS

## Feature



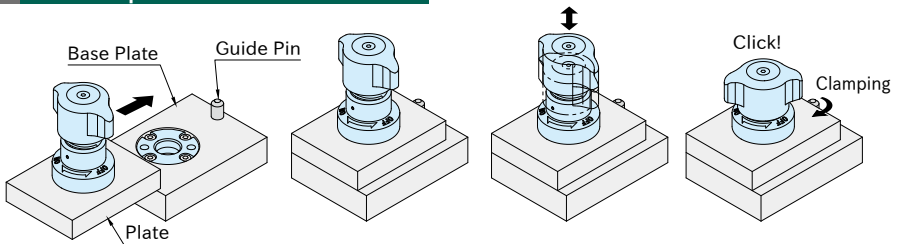
The shaft retracts at the unclamping position to enable operations without interference with the base plate.



The wedge of the locator pushes out the balls against the tapered surface of the receiver to clamp the two plates.

Provides constant clamping force with mechanical positive locking and spring force.

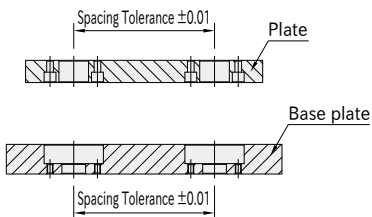
## How To Operate



1. Ensure that the knob is positioned at the "OFF" mark.
2. Slide the plate to the guide pin.
3. Insert the locator pressing the knob. The plate is located.
4. Turn the knob to the "ON" mark for clamping. The knob clicks when clamped. Turning the knob to the "OFF" position, the shaft returns automatically to the unclamping position by the spring.

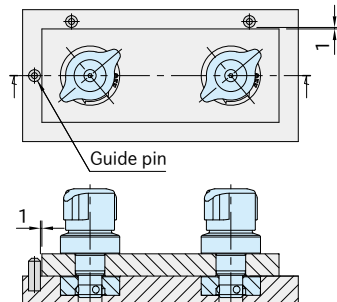
## Accuracy

### ■ Machining Accuracy



### ■ Repeatability

Repeatability 20μm

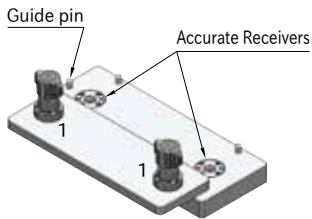


\* Use guide pins for rough locating. The clearance between guide pin and plate should be 1 mm or less.

### Tightening Order

1. Ensure that the knob is positioned at the “OFF” mark. Slide the plate to the guide pins.
2. Press down the knobs marked “1” to locate the plate.
3. Turn the knob and clamp in order of 1→2.

#### Use of 2 Locators



#### Use of 4 Locators

