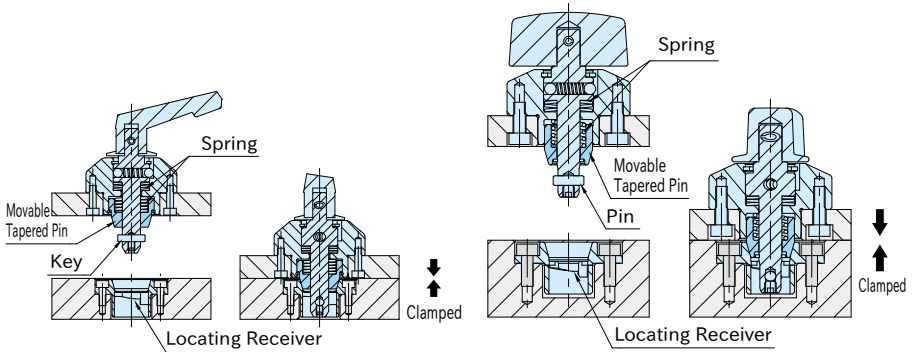


# How To Use ONE-TOUCH FLEX LOCATORS (Handle / Knob)

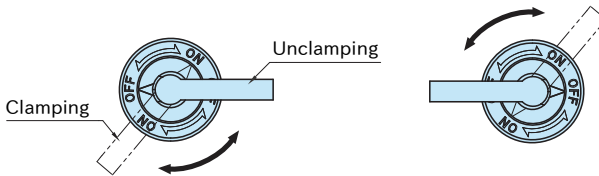
## Feature



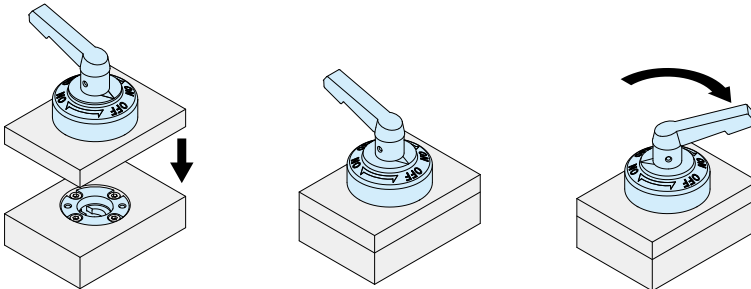
- Fitting of the tapered surfaces ensures precise positioning.
- Turning the handle engages the key of the locator with the cam of the locating receiver. This compresses the spring-loaded floating pin into contact with the tapered surface of the receiver to create a secure contact between the plate surfaces.

Straight pin locator has no locating function and is for clamping only.

**CP722** has two clamp and unclamp positions. Either position can be used for operability.



## How To Operate



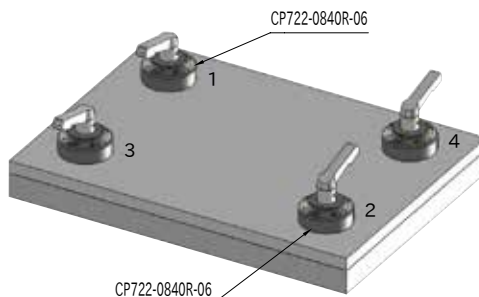
1. Ensure the handle is positioned at "OFF" mark.
2. Insert the Locator to the Locating Receiver.
3. Turn the handle to "ON" mark for clamping.

\*) Follow back these steps for unclamping.

\*) Same operation for Knob style.

## Tightening Order

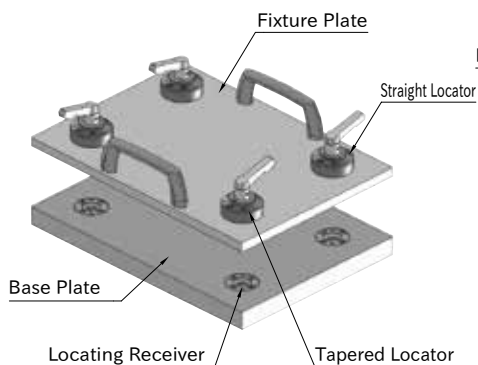
1. Ensure the handle is positioned at "OFF" mark and lift down the fixture plate.
  2. Turn the handle and clamp in order of 1→2→3→4.
- \*) For unclamping, ensure the handle is positioned at "OFF" mark and disassemble the fixture plate.



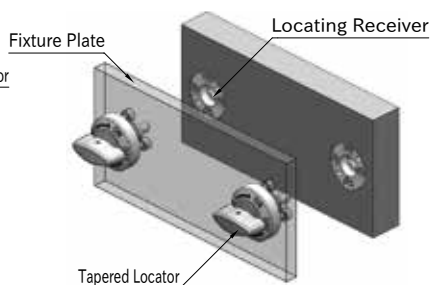
If the handles are not tightened in the correct order, the locating repeatability may exceed 10  $\mu$  m.

## How To Use

### Horizontal Assembly of Fixture Plate



### Vertical Assembly of Fixture Plate



Note: Ensure not to lift the fixture plate up and down with gripping the handle of the Locators.

Size		Horizontal Assembly		Vertical Assembly	
		Max. Loading Weight (kg)	Locating Repeatability	Max. Loading Weight (kg)	Locating Repeatability
CP723	0632R	12	10 $\mu$ m	12	20 $\mu$ m
CP727					
CP722	0840R	40		40	
CP723					
CP727					

Note: These values shown above are when 2 pairs of tapered Locators and tapered Locating Receivers are used. When 4 pairs of tapered Locators and tapered Locating Receivers are used, the maximum loading weight is double the above values.

Note: The maximum loading weight is the entire sum of the weight of fixture plates, fixtures and workpieces.

Note: When used in excess of the maximum loading weight, the locating repeatability may exceed the above values.