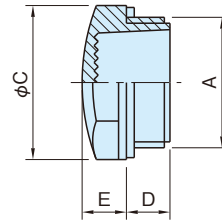
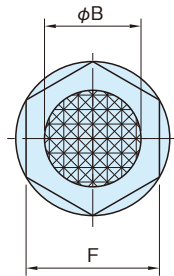


PRE

OIL LEVEL INDICATORS



ELESA Original Design HFTX.PR



Body & Window	Packing Ring
Special clear polyamide plastic	Nitro rubber (NBR)

Part Number	A	B	C	D	E	F	Screw Torque (N·m)	Weight (g)
PRE 9	$\frac{1}{4}$ -PF	9	18	10	6	15	2- 3	3
PRE12	$\frac{3}{8}$ -PF	11	22	7.5	7	19	3- 5	4
PRE15	$\frac{1}{2}$ -PF	14	26	10.5	8	22	4- 6	5
PRE20	$\frac{3}{4}$ -PF	20	31.5	10.5	9	27	6- 8	8
PRE24	1 -PF	25	40	11	10	34	8-10	12

- Screw-in mounting
- Working temperature : Between -30°C and 110°C
- Do not mount these plugs on the water tank to avoid them from expanding due to water absorption.
- Unresistant to alcohol.