

NSTH / STH

STAINLESS STEEL ANGLED-SPOKE HANDWHEELS

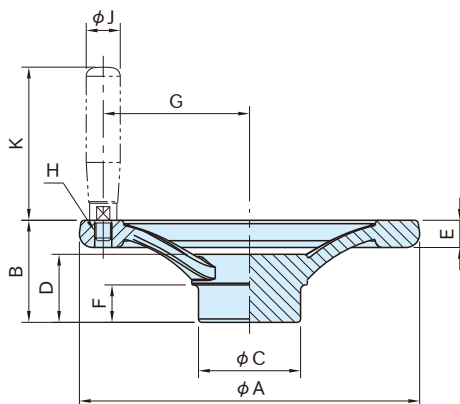

NSTH

(Without Handle-Mounting Tapped Hole)


STH

(With Handle-Mounting Tapped Hole)

Note: Handle must be ordered separately.



Handwheel

SCS13 (equivalent to SUS304)
Electropolished finish

Part Number		A	B	C	D	E	F	[STH]Type Only		Weight (g)
Without Handle-Mounting Tapped Hole	With Handle-Mounting Tapped Hole							G	H	
NSTH100	STH100	100	30	30	20	8	11	43	M 5×0.8	360
NSTH125	STH125	125	35	35	22		13	55	M 6×1	540
NSTH160	STH160	160	40	40	24	9	13	70	M 8×1.25	900
NSTH200	STH200	200	45	45	28	11	15	88	M10×1.5	1570

Recommended Handles

Part Number	Stainless Steel Revolving Handles		
	Part Number	J	K
STH100	SRG10	10	45
STH125	SRG13	13	57
STH160	SRG16	16	68
STH200	SRG20	20	80

- All made from stainless steel, for excellent corrosion resistance.
- Perfect for use on food processing machines, washing machines and the like.