

# NIP,NIPS

# IDLE PULLEYS

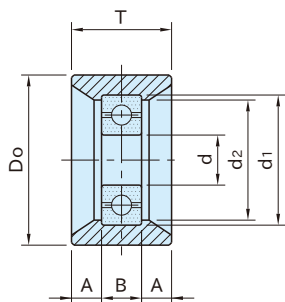


**NIP**  
(Plastic)

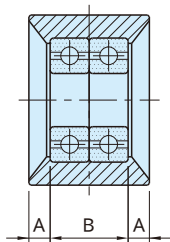


**NIPS**  
(Steel)

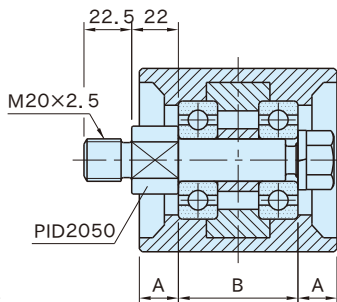
Type	Body	Bearing	Retaining Ring
<b>NIP</b>	Glass-fiber reinforced polyamide plastic Black	Steel	-
<b>NIPS</b>	Steel (S45C) Electroless nickel plated finish		Steel



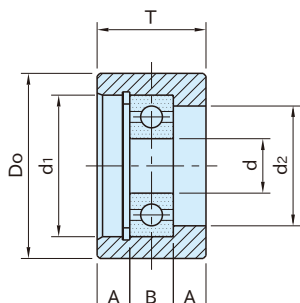
**NIP** 0825~2550 (Plastic)



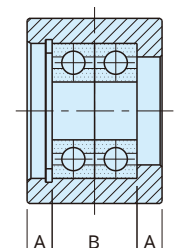
**NIP** 3050~5560 (Plastic)



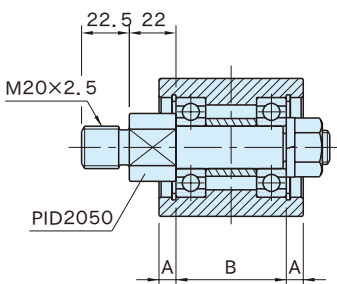
**NIP** 6065,8080 (Plastic)



**NIPS** 1535~2550 (Steel)



**NIPS** 3050~5560 (Steel)



**NIPS** 6065 (Steel)

## NIP (Plastic)

Part Number	Do	T	d	B	d <sub>1</sub>	d <sub>2</sub>	A	Bearing	Weight (g)	Proper Idler Pin	
NIP0825	24	12	6	6	17	15	3	606ZZ	15	PID0606	
NIP1130	29	15	8	7	22	20	4	608ZZ	20	PID0807	
NIP1535	34	20	10	8	26	24	6	6000ZZ	25	PID1008	
NIP2045	43	24.5	15	11	35	32	7	6202ZZ	60	PID1511	
NIP2055	54	25							70		
NIP2065	63	24.5							90		
NIP2075	73								105		
NIP2550	48	30							32		9.5
NIP3050	48	34.5	15	22	35	32	6	6202ZZ×2	120	PID1522	
NIP3075	73								33		165
NIP4550	48								49		32
NIP5560	57	60	20	28	47	43	16	6204ZZ×2	285	PID2028	
NIP6065	64	70							9	940	PID2050(included)
NIP8080	78	92							44	20	

## NIPS (Steel)

Part Number	Do	T	d	B	d <sub>1</sub>	d <sub>2</sub>	A	Bearing	Weight (g)	Proper Idler Pin	
NIPS1535	34	20	10	8	26	22	6	6000ZZ	65	PID1008	
NIPS2045	43	25	15	11	35	28	7	6202ZZ	160	PID1511	
NIPS2550	48	30							9.5		270
NIPS3050	48	35	15	22	35	28	6.5	6202ZZ×2	325	PID1522	
NIPS3550		40							9		380
NIPS4550		49							13.5		440
NIPS5560		57							60		20
NIPS6065	64	70	52	28	47	40	9	6204ZZ×2	1530	PID2050(included)	

### Features

- Can be used in flat-belt or timing-belt applications.
- NIP type is available with moulded-in ball bearing.
- The ball bearing of NIPS types is locked by a retaining ring.

### Furnished With

NIP 6065, NIP 8080, NIPS 6065  
Idle Pulleys come with a PID2050 Idler Pin

### Reference

- TENSIONER ASSEMBLY EXAMPLES

### Technical Information

Allowable Bearing Radial Loads (N) (for 3,000 hours of average service life)

Bearing	Speed (min <sup>-1</sup> )							
	100	500	1000	1500	2000	2500	3000	3500
606ZZ	680	390	310	270	250	230	210	200
608ZZ	990	580	460	400	360	340	320	300
6000ZZ	1370	1090	640	560	500	470	440	420
6202ZZ	2310	1350	1080	940	850	790	740	710
6202ZZ×2	3740	2180	1740	1520	1370	1280	1200	1140
6204ZZ×2	6240	3650	2900	2530	2300	2130	2010	1910