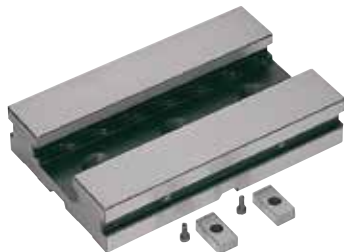
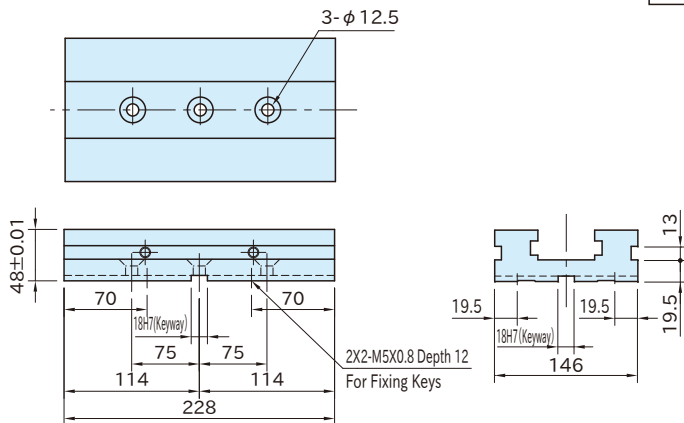


# MVCM150EB

# EXTENSION BASE



Body
Steel(SNCM420)
Case hardened
Precision ground
Black oxide finished
HRC50~60



Part Number	Weight (kg)
<b>MVCM150EB</b>	9

**Note**  
The keyways on the back of the vise (recessed with H7) are only for the key attachments.

### Application Example

- Use to extend the base of the Modular Vises.
- Perfect for machining the long workpiece.

### Furnished Parts

Pair of positioning key

