

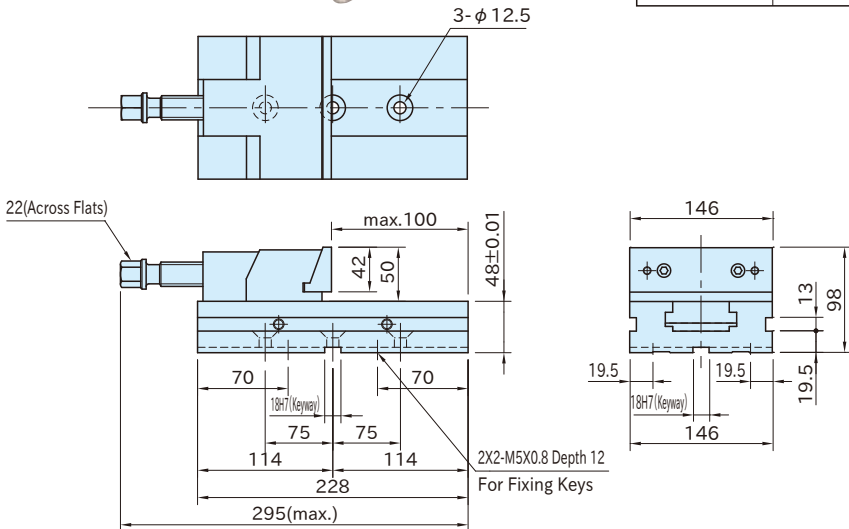
# MVCM150CB

# CLAMPING BASE

On Request



Base	Jaw
Movable Support	
Steel(SNCM420) Case hardened Precision ground Black oxide finished HRC50~60	Steel(SNCM420) Case hardened Precision ground HRC50~60

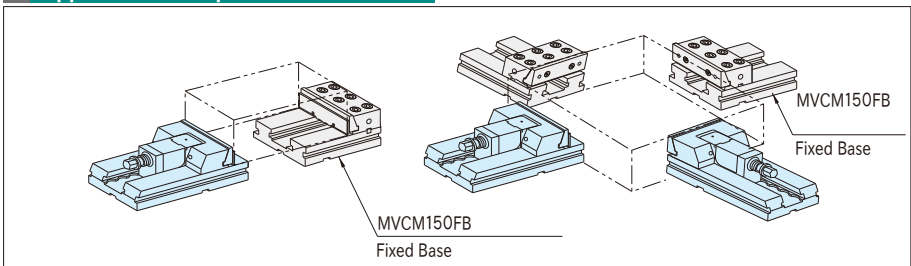


Part Number	Weight (kg)
MVCM150CB	15.1

### Furnished Parts

- Pair of positioning keys
- 1 of tightening wrench

### Application Example



### Notes:

- This jaw is non-stock item.
- The keyways on the back of the base (recessed with H7) are only for the key attachments.

### Reference

MODULAR VISE PARTS BREAKDOWN

Use as a set with the fixed base. The modularity provides the usage as fixturing components.