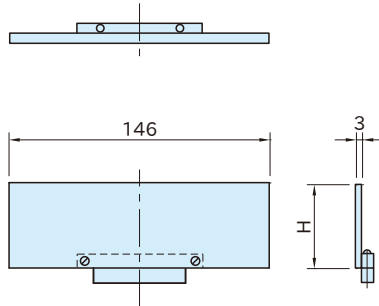


# MVCL150P

# PAIR OF MODULAR PARALLELS



(2 pcs. as a set)

Body
Steel (SK70)
Case hardened
Precision ground
HRC40~45

Part Number	H ( $-0.015$ )	Weight (g)	Proper Modular Vise
<b>MVCL150P12</b>	12	14	<b>MVMF150</b>
<b>MVCL150P15</b>	15	18	
<b>MVCL150P20</b>	20	23	
<b>MVCL150P25</b>	25	29	
<b>MVCL150P30</b>	30	35	
<b>MVCL150P35</b>	35	40	
<b>MVCL150P40</b>	40	46	
<b>MVCL150P43</b>	43	50	
<b>MVCL150P45</b>	45	52	
<b>MVCL150P47</b>	47	54	

## How To Use

For machining thin workpieces and drilling through holes.

