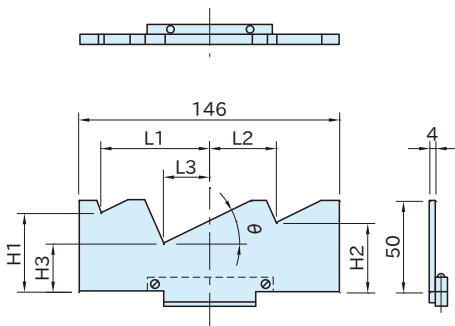


# MVCL150A

# PAIR OF MODULAR ANGULAR PARALLELS



(Pair of symmetric parallels)

Body
Steel (SK70)
Case hardened
Precision ground
HRC40~45

Part Number	$\theta$	H1	H2	H3	L1	L2	L3	Weight (g)	Proper Modular Vise
<b>MVCL150A20</b>	20°	44.2	40	30.7	60.9	35.6	29.5	23	<b>MVMF150</b>
<b>MVCL150A25</b>	25°	43.1	38.1	27	59.8	37.5	25.8	29	
<b>MVCL150A30</b>	30°	42.2	36.6	24	58.5	39.7	21.5	34	
<b>MVCL150A35</b>	35°	41.5	35.4	21.8	57	42.2	16.7	38	
<b>MVCL150A40</b>	40°	41.1	34.7	20.4	55.6	44.8	11.7	46	
<b>MVCL150A45</b>	45°	41	34.5	20	54	47.5	6.5	52	

## How To Use

For angled machining.

