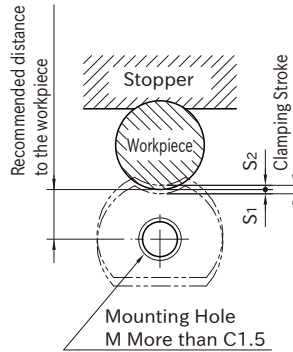
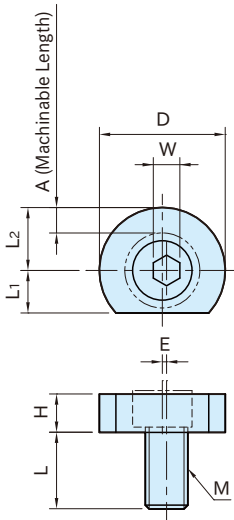




Cam Screw	Machinable Washer
Steel(SCM440) Black oxide finished HRC38~45	Steel(SUM24L) Black oxide finished



Part Number	A	E	S ₁	S ₂	D	L ₁	L ₂	H	M	L	W	Clamping Force (N)	Allowable Screw Torque (N·m)	Weight (g)
MBFCS06	6.4	0.5	0.4	0.6	24.9	7.8	12.4	6.4	M 6×1	11.9	4	3,500	8	22
MBFCS10	7	0.63	0.53	0.73	31.2	10.2	15.6	8.9	M10×1.5	18	7	8,800	27	53
MBFCS12	7.6	1	1	1	37.6	12.7	18.8	11.4	M12×1.75	22.9	8	17,000	88	100
MBFCS16	8.9	1.27	1.22	1.32	43.9	15	21.9	14	M16×2	28.6	12	26,000	135	190

Feature:

- The eccentric cam screw provides fast and strong clamping.
- The simple design keeps cost low and the small size allows more parts per load.
- Perfect for clamping thin workpieces.
- Can be Machinable to the contours of parts of cylindrical shape.

Notes:

- Clockwise rotation is recommended.
- The cam screw head may project from the hexagonal washer up to 3mm.
Eusure that there are no interference with tools.

How To Use



Installation Instructions

1. Drill and tap mounting holes and machine the machinable washer in consideration of the machinable length (dimension A).
(Use machining screws to be ordered separately.)
 2. For loading workpieces, tighten the cam screw fully and then loosen it one turn.
 3. Load workpieces and tighten the cam screw.
- *) Ensure that workpieces are clamped firmly before machining.