

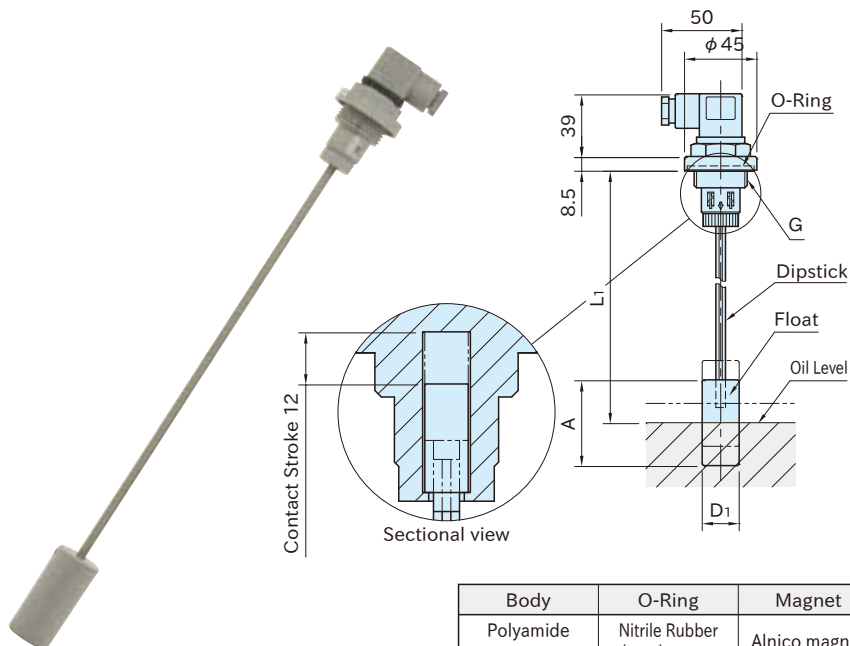
LF-E

LEVEL INDICATORS WITH FLOAT



IP65

Original ELESa Model HFLT-E



Body	O-Ring	Magnet
Polyamide Grey	Nitrile Rubber (NBR)	Alnico magnet

Part Number	G	L ₁ *)		D ₁	A	Weight (g)	Parallel Pipe Thread Prepared Hole
		min.	max.				
LF-250E	G ³ / ₄	75	250	23	50	110	24.5
LF-360E	G1	85	360	30	60		30.6

*)The dipstick can be cut to a desired length.

Features:

- The float detects the oil level.
- The contact can be easily switched over between NO(normally open) and NC(normally closed).
- These indicators using no magnetic parts in the float are ideal for use in tanks containing dirty liquids, water, oils and coolant oils.
- Can be used in liquids with any electrical conductivity.
- The plug can be directed differently by connecting the connector to the contact holder at different positions.
- Protection class : IP65

Caution

Ensure that the float does not drop off when the level indicator is removed from the tank.

Technical Information

Working temperature : -20°C to 80°C

Electrical Characteristics

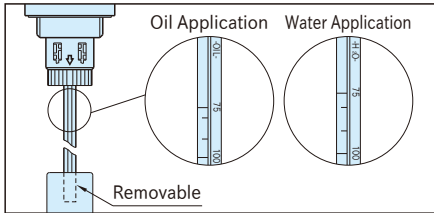
- Max. voltage : DC230V
- Max. current : 2A
- Contact capacity : 40VA
- Connector : Protection class IP65
Thread size PG11 (For ϕ 8 - 10 cable)
(Supplied small packing-ring is available for ϕ 6 - 8 cable.)
- Cross section of cable conductor : Max. 1.5mm²

Supplied With:

- 1 of O-ring
- 1 of Small Packing-Ring for Plug

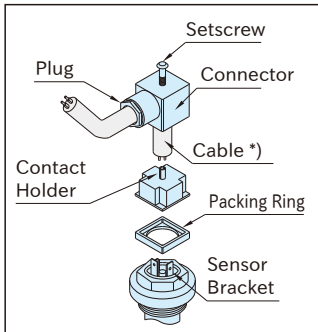
How To Use

How To Adjust Dipstick Length



- Pull the dipstick out from the float.
- The scales on the dipstick for oil and water applications represent the dimension L1.
- Cut the dipstick at a desired length with tools such as cutting pliers.
- The length inserted into the float is already included to the scales on the dipstick.
- Insert the dipstick into the float.

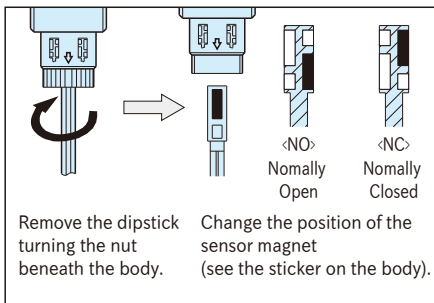
How To Connect



1. Remove the connector from the body unscrewing the setscrew on the top.
2. Remove the packing ring to take out the contact holder and then loosen the plug
3. Insert the cable through the plug into the connector to connect it to the terminals #1 and #2 of the contact holder.
4. Press the contact holder into the connector for assembly at a desired position. Next, set the packing ring to place the assembly back on the body, and then tighten the setscrew.
5. Tightening the plug completes cabling.

*) Not furnished

How To Switch Over Contact



Application Example

