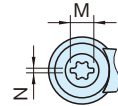
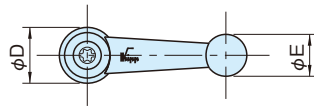


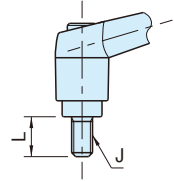
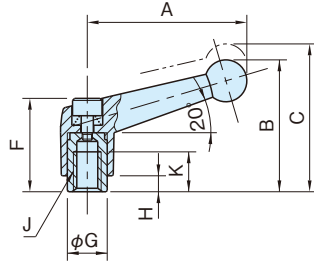


# KF / KR

# METAL ADJUSTABLE HANDLES



Socket for both hexalobular and flathead screwdrivers



**KF KF-SUS**  
(Tapped)

**KR KR-SUS**  
(Stud)

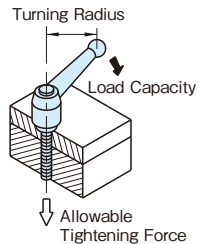
★Key Point  
Ball shaped handle end

Type	Handle	Locking Element
<b>KF</b>	Die cast zinc (ZDC1)	Steel (SUM22L)
<b>KR</b>		Black oxide finish
<b>KF-SUS</b>	Silver painted	Stainless steel
<b>KR-SUS</b>		(SUS303)

Type / Size	Teeth	A	B	C	D	E	F	G	H	J	M	N	Screwdriver		
													Flathead	Hexalobular socket	
<b>KF</b>	4	16	40	33	37	14	10.5	24	10	4	5.5	1	$\ominus 5.5$	No.20 (T20)	
	5														
	6														
<b>KF-SUS</b>	8	20	65	46	50	18.5	15.5	29	13.5	6.5					
<b>KR</b>	10	22	80	58	62	22	17	37.5	16						
<b>KR-SUS</b>	12	24	95	67	71	26	19	42.5	19	10					
	16	26	110	79	84	31	22	51	23	12	7.5	1.5	$\ominus 7$ ( $\ominus 6$ )	— (T27)	

## Tightening Capacity

Type/Size	<b>KR KR-SUS</b>						
	4	5	6	8	10	12	16
Thread Diameter	M4	M5	M6	M8	M10	M12	M16
Turning Radius(mm)	30	30	30	55	70	85	100
Load Capacity(N)	70	135	215	290	445	640	1300
Allowable Tightening Force(N)	1800	3100	4300	8000	12800	18600	33500



**KF KF-SUS (Tapped)**

Steel Locking Element	Stainless-Steel Locking Element	K	Weight (g)
Part Number	Part Number		
KF 4	-	9	30
KF 5	KF 5-SUS		
KF 6	KF 6-SUS		
KF 8	KF 8-SUS	12	80
KF10	KF10-SUS	14	120
KF12	KF12-SUS	17	190
KF16	KF16-SUS	23	300

**KR KR-SUS (Stud)**

Steel Locking Element	Stainless-Steel Locking Element	L	Weight (g)
Part Number	Part Number		
KR 4×10	-	10	30
KR 4×15	-	15	31
KR 5×10	KR 5×10-SUS	10	30
KR 5×15	KR 5×15-SUS	15	31
KR 5×20	KR 5×20-SUS	20	33
KR 5×25	KR 5×25-SUS	25	34
KR 5×30	KR 5×30-SUS	30	35
KR 6×10	KR 6×10-SUS	10	30
KR 6×15	KR 6×15-SUS	15	31
KR 6×20	KR 6×20-SUS	20	33
KR 6×25	KR 6×25-SUS	25	34
KR 6×30	KR 6×30-SUS	30	35
KR 8×15	KR 8×15-SUS	15	80
KR 8×20	KR 8×20-SUS	20	81
KR 8×25	KR 8×25-SUS	25	82
KR 8×30	KR 8×30-SUS	30	83
KR 8×40	KR 8×40-SUS	40	85
KR10×20	KR10×20-SUS	20	130
KR10×25	KR10×25-SUS	25	133
KR10×30	KR10×30-SUS	30	140
KR10×40	KR10×40-SUS	40	145
KR10×50	KR10×50-SUS	50	150
KR12×25	KR12×25-SUS	25	215
KR12×30	KR12×30-SUS	30	220
KR12×40	KR12×40-SUS	40	225
KR12×50	KR12×50-SUS	50	230
KR12×60	KR12×60-SUS	60	240
KR16×30	KR16×30-SUS	30	360
KR16×40	KR16×40-SUS	40	375
KR16×50	KR16×50-SUS	50	390
KR16×60	KR16×60-SUS	60	400

**How To Adjust Handle Position**


Lift the handle to disengage the teeth from the locking element.



Turn the lifted handle to a desired position.



When the handle is released, the return spring automatically engages the teeth again for further tightening.