

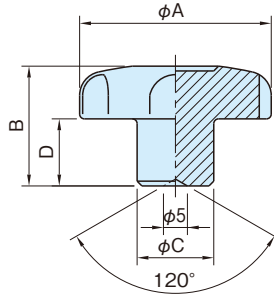
# HK-SUS STAINLESS STEEL HAND KNOBS



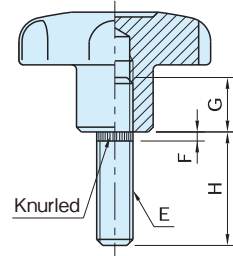
(Blank)



(Stud)



(Blank)



(Stud)

Body	Stud
Stainless steel (SCS13 equivalent to SUS304) Electropolished	Stainless steel (SUS303)

## Blank

Part Number	A	B	C	D	Weight (g)
<b>HK32-SUS</b>	32	22	13	11	70
<b>HK40-SUS</b>	40	25	16	14	115
<b>HK50-SUS</b>	50	32	20	18	220
<b>HK63-SUS</b>	63	40	25	23	435

## Stud

Part Number	A	B	C	D	E	F	G	H	Weight (g)
<b>HK32×20-SUS</b>	32	22	13	11	M 6×1	1.5	9	20	71
<b>HK32×30-SUS</b>								30	74
<b>HK40×30-SUS</b>	40	25	16	14	M 8×1.25	1.5	12	30	118
<b>HK40×40-SUS</b>								40	121
<b>HK40×50-SUS</b>								50	124
<b>HK50×30-SUS</b>	50	32	20	18	M10×1.5	2	14	30	232
<b>HK50×40-SUS</b>								40	237
<b>HK50×50-SUS</b>								50	242
<b>HK63×30-SUS</b>	63	40	25	23	M12×1.75	2	17	30	440
<b>HK63×40-SUS</b>								40	447
<b>HK63×50-SUS</b>								50	454