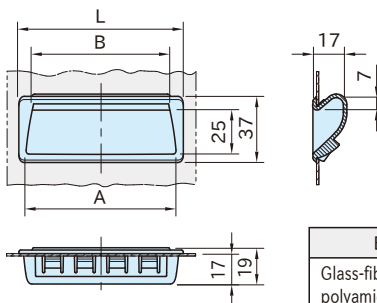


# FPH

# PULL HANDLES



Original ELESA Model PR-PF



<b>Body</b>
Glass-fiber reinforced polyamide plastic
Black matte

Part Number	L	B	A	Weight (g)
<b>FPH 92SL</b>	92	76	83	19
<b>FPH137SL</b>	137	122	128	28

### Feature:

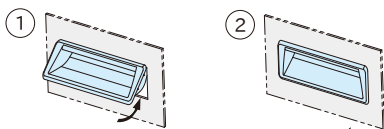
Easy snap-in installation.

### Note:

Use in hot or highly humid circumstances can deteriorate the plastic material properties.

### How To Use

#### Installation Instructions



1. Fit the upper part of the handle into the panel and press the lower part until the handle is completely snapped in.

2. The handle is fixed.

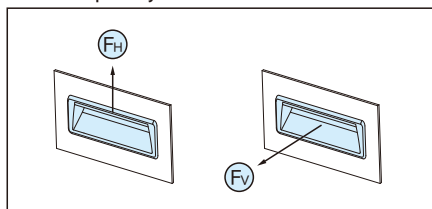
### Technical Information

Working temperature : Between 0°C and 80°C

#### Strength Data

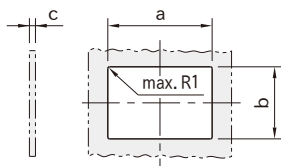
Part Number	F <sub>H</sub> [N]	F <sub>V</sub> [N]
<b>FPH 92SL</b>	1800	500
<b>FPH137SL</b>		

#### Load Capacity



The stated values denote the average of loads measured in breaking test under normal working conditions.

### Mouting Cutout



Deburr the edge before installing a handle.

c (Panel thickness)	<b>FPH92SL</b>		<b>FPH137SL</b>	
	a(+0.2)	b(±0.1)	a(+0.2)	b(±0.1)
Over 0.7 to 1	87.5	30.5	132	30.5
Over 1 to 1.5		30.7		30.7
Over 1.5 to 2		31.7		31.7
Over 2 to 2.2				