

# EWN-SUS, ENWN-SUS

# ERGOSTYLE WING NUTS



Stainless Steel

Original ELES A Model EWN.



**EWN-SUS**

(Tapped, Capped)



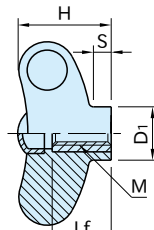
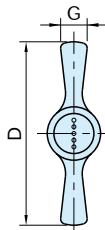
**EWN-SUS**

(Stud, Capped)

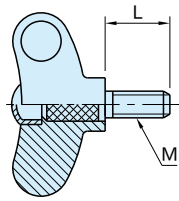


**ENWN-SUS**

(Tapped, Uncapped)



**EWN-SUS**  
(Tapped, Capped)



**EWN-SUS**  
(Stud, Capped)



**ENWN-SUS**  
(Tapped, Uncapped)



Knob	Cap	Insert	Stud
Glass-fiber reinforced polyamide plastic Black matte	Polyamide plastic Black matte, orange matte, gray matte, yellow matte, light blue or red matte	SUS303 stainless steel	SUS303 stainless steel

## **EWN-SUS** (Tapped, Capped)

Part Number	D	M	H	G	D <sub>1</sub>	S	Lf	Weight (g)
<b>EWN40A-SUS-**</b>	40	M 5×0.8	20	6	13.5	4	12	10
<b>EWN48A-SUS-**</b>	47	M 6×1	24	7		5.5		
<b>EWN55A-SUS-**</b>	55	M 8×1.25	28	8	16	6.5	18	19
<b>EWN63A-SUS-**</b>	63	M10×1.5	32	9	19	7.5	20	28
<b>EWN70A-SUS-**</b>	70		36	10	20	8		33

\*\* Complete with color code for a center cap.

## **ENWN-SUS** (Tapped, Uncapped)

Part Number	D	M	H	G	D <sub>1</sub>	S	Lf	d <sub>1</sub>	d <sub>2</sub>	Weight (g)
<b>ENWN40A-SUS</b>	40	M 5×0.8	20	6	13.5	4	12	10	8.5	10
<b>ENWN48A-SUS</b>	47	M 6×1	24	7		5.5				9
<b>ENWN55A-SUS</b>	55	M 8×1.25	28	8	16	6.5	18	12	10.5	18
<b>ENWN63A-SUS</b>	63	M10×1.5	32	9	19	7.5	20	14		26
<b>ENWN70A-SUS</b>	70		36	10	20	8		15	13	31

**EWN-SUS** (Stud, Capped)

Part Number	D	M	H	G	D <sub>1</sub>	S	L	Weight (g)		
<b>EWN40A×16SUS-<sup>**</sup></b>	40	M 5×0.8	20	6		4	16	9		
<b>EWN40A×20SUS-<sup>**</sup></b>							20			
<b>EWN48A×20SUS-<sup>**</sup></b>	47	M 6×1	24	7	13.5	5.5	20	13		
<b>EWN48A×30SUS-<sup>**</sup></b>							30	15		
<b>EWN48B×20SUS-<sup>**</sup></b>							20	20		
<b>EWN48B×30SUS-<sup>**</sup></b>		30					22			
<b>EWN48B×40SUS-<sup>**</sup></b>		40					25			
<b>EWN55 ×20SUS-<sup>**</sup></b>	55	M 8×1.25	28	8	16	6.5	20	23		
<b>EWN55 ×30SUS-<sup>**</sup></b>							30	26		
<b>EWN63A×20SUS-<sup>**</sup></b>	63		M10×1.5	32	9	19	7.5	20	36	
<b>EWN63A×30SUS-<sup>**</sup></b>								30	42	
<b>EWN70A×20SUS-<sup>**</sup></b>	70				36	10	20	8	20	41
<b>EWN70A×30SUS-<sup>**</sup></b>									30	47

<sup>\*\*</sup> Complete with color code for a center cap.

**Feature**

- Concave wings for comfortable finger gripping.
- The cap can be removed easily by inserting a bolt into the knob from the bottom to push out the cap.

**Notes**

- Use in hot or highly humid circumstances can deteriorate the plastic material properties.
- A cap and a knob are packed separately and not delivered in assembly.

**Technical Information**

Working temperature max. 130°C min. -30°C

**Ordering Example**  
(Specify a color of the cap)

<b>EWN48A-SUS - BR</b>		Color Code	Cap Color
Part Number	Color Code	OG	Orange
		GR	Gray
		YE	Yellow
		LB	Light blue
		BR	Black
		RE	Red

