

DLH

DOOR LOCK HANDLES



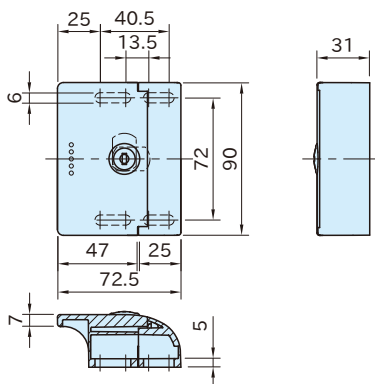
Original ELESa Model ESC



DLH90



DLH90LK



Type	Handle	Retention Wing	Key Hole	Key
DLH90	Glass-fiber reinforced polyamide plastic Black matte	Polyacetal plastic Black matte	—	—
DLH90LK			Die-cast zinc Nickel plated	Brass Nickel plated

Part Number	Type	Max. Screw Torque (N·m)	Weight (g)
DLH90	Without Key Hole	5	83
DLH90LK	With Key Hole		115

Supplied With

DLH90LK 2 of keys

Technical Information

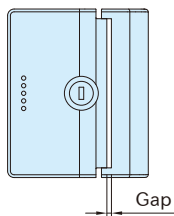
Working temperature : -20 to 60°C

Features:

- The key is removable at the locking position and 180° from the locking position.
- The distance of mounting holes for the handle and the retention wing is 13.5-40.5.

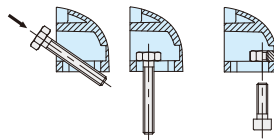
Note:

For mounting, minimize the gap between the handle and the retention wing.



How To Use

Installation Instructions



Application Examples

