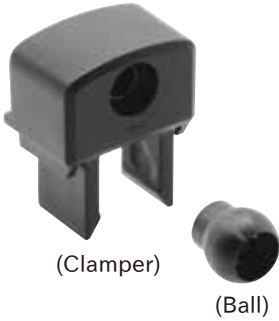


# DLB

# BALL-SHAPED DOOR LOCK



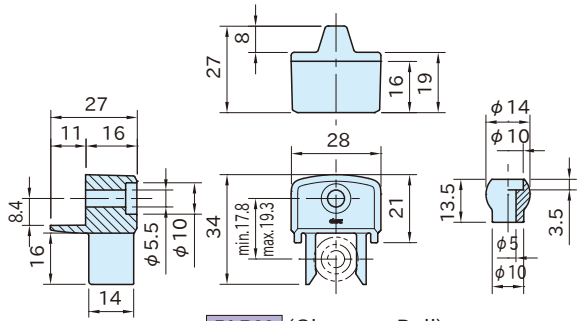
Original ELESA Model BPS



(Clamper)

(Ball)

**DLB30**



**DLB30** (Clamper, Ball)



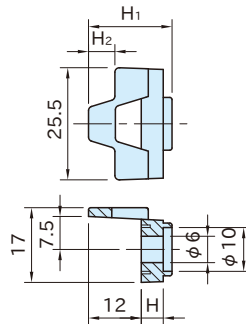
**DLB30-05**



**DLB30-10**



**DLB30-15**



**DLB30** -05~15  
(Spacer)

Type	Clamper	Ball	Spacer
<b>DLB30</b>	Polyacetal plastic Black matte	Glass-fiber reinforced polyamide plastic Black matte	
<b>DLB30-05</b>			Polyacetal plastic Black
<b>DLB30-10</b>	-	-	
<b>DLB30-15</b>			

**DLB30** (Clamper, Ball)

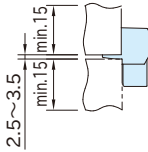
Part Number	Holding Force (N)	Weight (g)
<b>DLB30</b>	30	10

**DLB30** -05~15 (Spacer)

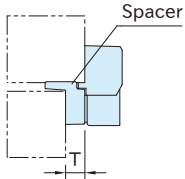
Part Number	H	H <sub>1</sub>	H <sub>2</sub>	Weight (g)
<b>DLB30-05</b>	5	19	6	3
<b>DLB30-10</b>	10	23	8	4
<b>DLB30-15</b>	15	28	9	5

## How To Use

### Mounting Dimensions



The distance between door and frame must be within 2.5-3.5 mm. The minimum thickness of frame is 15 mm.

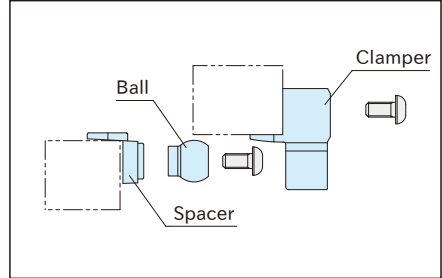


Thickness differences between frame and door T (mm)	Proper Spacers
0	-
5	DLB30-05
10	DLB30-10
15	DLB30-15
20	DLB30-10 + DLB30-10
25	DLB30-10 + DLB30-15
30	DLB30-15 + DLB30-15

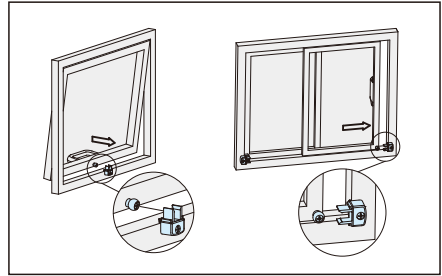
## Technical Information

Working temperature : -20 to 60°C

### Installation Instruction



### Application Examples



This ball-shaped door lock is ideal for various doors, such as hatch doors or sliding doors.