

CP745

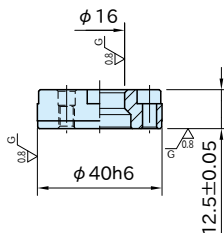
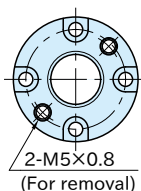
LOCATING RECEIVERS



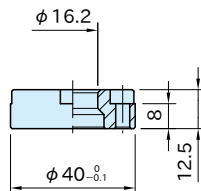
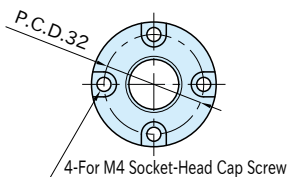
CP745-1640L
(Accurate)



CP745-1640S
(Standard)



CP745-1640L
(Accurate)



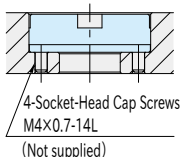
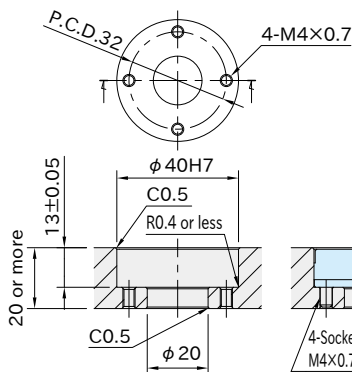
CP745-1640S
(Standard)

Part Number	Type	Weight (g)
CP745-1640L	Accurate	81
CP745-1640S	Standard	83

Body
SCM440 steel Electroless nickel plated Quenched and tempered

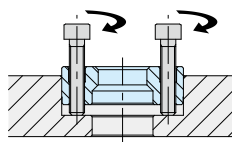
How To Use

■ Mounting Hole Dimension



■ How to Remove

For removal, insert screws into the tapped holes and screw it.



Related Product

CP740 RETRACTABLE ONE-TOUCH CLAMPING LOCATORS

Reference

How To Use RETRACTABLE ONE-TOUCH FLEX LOCATORS