

CP710

SPRING-LOADED WORK LOCATORS

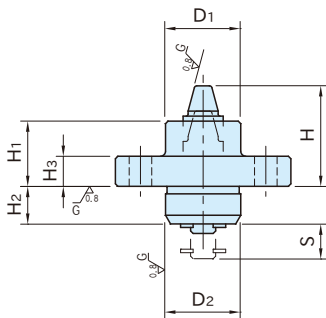
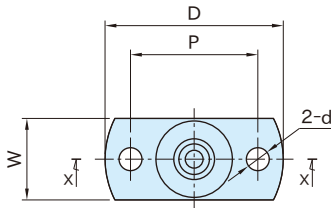


CP710-A
(Standard)

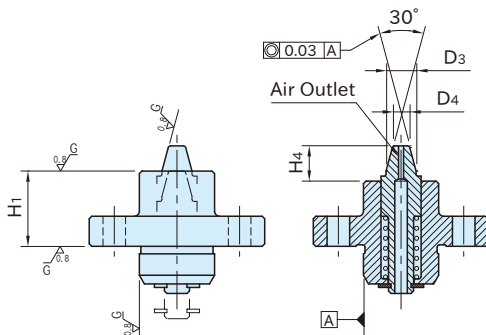


CP710-B
(Accurate)

Body	Locating Pin
Steel (S45C) Quenched and tempered Black oxide finish	Steel (SK95) Quenched and tempered



CP710-A
(Standard)



CP710-B
(Accurate)

Section X-X

■ Standard

Part Number	Proper Through-Hole Dia. *)	D ₄	D ₃	H ₄	S	H	H ₁	D ₂ (g6)	H ₂	D
CP710-04015A	φ 3.8~φ 5.2	3.1	6	7.6	7.4	20.6	13	15	7.5	35
CP710-05015A	φ 4.8~φ 6.2	4.1	7							
CP710-06020A	φ 5.8~φ 8.2	5.1	9	9.6	9.9	27.6	18	20	10	40
CP710-08020A	φ 7.8~φ 10.2	7.1	11							
CP710-10025A	φ 9.3~φ 12.7	8.6	13.5	11.6	12.4	34.6	23	25	12.5	45
CP710-12025A	φ 12.3~φ 15.7	11.6	16.5							

Part Number	D ₁	W	H ₃	d	P	Support Capacity (N)	I.D. SpringConstant (N/mm)	Weight (g)
CP710-04015A	15	16	6	4.5	25	5.8~20	2.54	45
CP710-05015A					30	4.8~21.3	2.18	95
CP710-06020A	20	22	8		35	8.6~21.1	1.3	160
CP710-08020A					30	4.8~21.3	2.18	95
CP710-10025A	25	26	10	35	8.6~21.1	1.3	160	
CP710-12025A				35	8.6~21.1	1.3	170	

■ Accurate

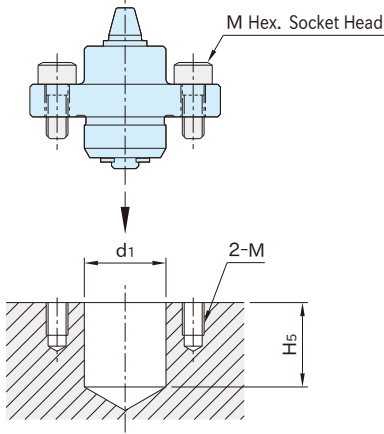
Part Number	Proper Through-Hole Dia. *)	D ₄	D ₃	H ₄	S	H	H ₁ (±0.01)	D ₂ (g6)	H ₂	D
CP710-04015B	φ 3.8~φ 5.2	3.1	6	5.6	7.4	20.6	15	15	7.5	35
CP710-05015B	φ 4.8~φ 6.2	4.1	7							
CP710-06020B	φ 5.8~φ 8.2	5.1	9	7.6	9.9	27.6	20	20	10	40
CP710-08020B	φ 7.8~φ 10.2	7.1	11							
CP710-10025B	φ 9.3~φ 12.7	8.6	13.5	9.6	12.4	34.6	25	25	12.5	45
CP710-12025B	φ 12 ~φ 16	11.6	16.5							

Part Number	D ₁	W	H ₃	d	P	Support Capacity (N)	I.D. SpringConstant (N/mm)	Weight (g)
CP710-04015B	15	16	6	4.5	25	5.8~20	2.54	50
CP710-05015B					30	4.8~21.3	2.18	100
CP710-06020B	20	22	8		35	8.6~21.1	1.3	170
CP710-08020B					30	4.8~21.3	2.18	100
CP710-10025B	25	26	10	35	8.6~21.1	1.3	170	
CP710-12025B				35	8.6~21.1	1.3	170	

*) The through hole can be chamfered up to 1x1mm.

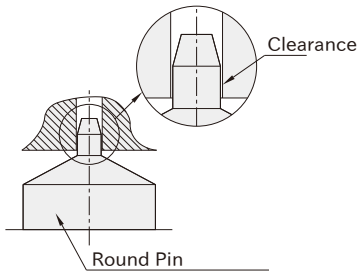
How To Use

■ Mounting Hole Dimensions

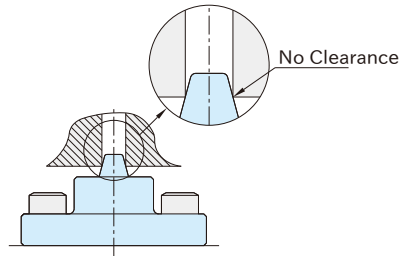


Series	d ₁ (H7)	H ₅	M
CP710-04015	15	16	M4×0.7
CP710-05015	(H7-effective depth : 8)		
CP710-06020	20	21	
CP710-08020	(H7-effective depth : 10)		
CP710-10025	25	26	
CP710-12025	(H7-effective depth : 13)		

Present Method

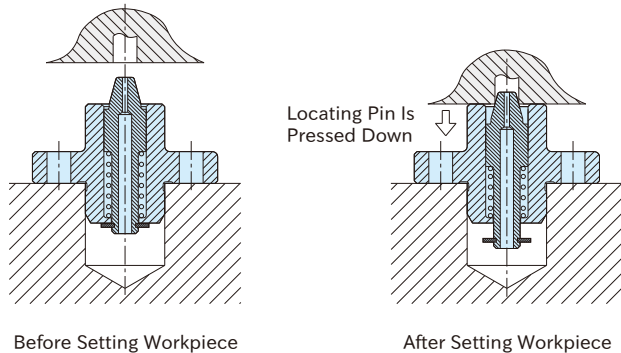


Imao Method

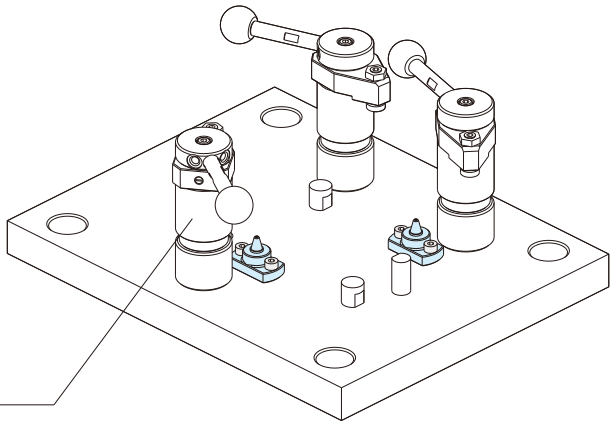
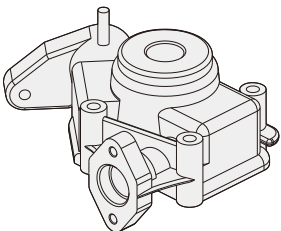
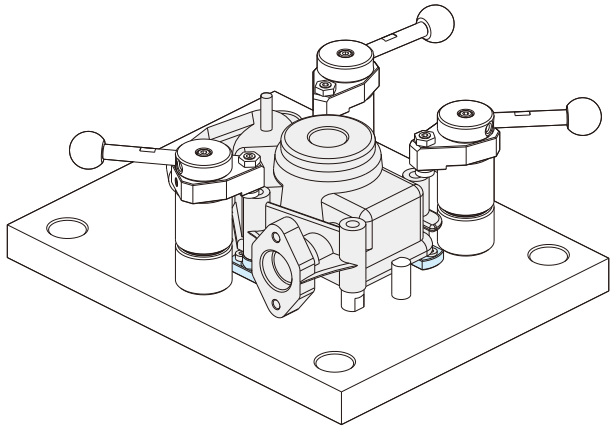


Use of tapered pin allows secure locating with no clearance between the locating hole and the tapered pin.

■ Accurate



When the workpiece is set, the tapered pin is pressed down to locate it. The accurate style allows vertically as well as horizontally positioning the workpiece with accuracy.



QLSW
Swing Clamp

Note: In clamping, hold down the workpiece by hand to avoid lift that can be generated by spring force.