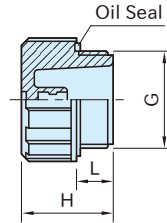
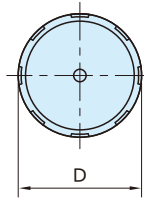


**CP****FLUTED PLUGS**

Original ELESA Model T.440



Body	Oil Seal
Polyamide plastic Black matte	Nitrile rubber (NBR)

Part Number	G	L	D	H	Weight (g)
<b>CP-1/4</b>	G 1/4	9	20.5	19	10
<b>CP-3/8</b>	G 3/8		25	21	12
<b>CP-1/2</b>	G 1/2	11	28.5	25	14
<b>CP-3/4</b>	G 3/4	12	34.5	27	22
<b>CP-1</b>	G1	13	42.5	28.5	28
<b>CP-1.1/4</b>	G1 1/4		52	32	52
<b>CP-1.1/2</b>	G1 1/2		57.5	34	63

**Note**

Avoid using these plugs on water tanks, where plugs will expand due to water absorption.

**Technical Information**

Working temperature : Between -30°C and 120°C