

CAF8

CASTORS (F8 Series)



Original ELESA Model RE.F8



CAF8-PBL
(Fixed Bracket)

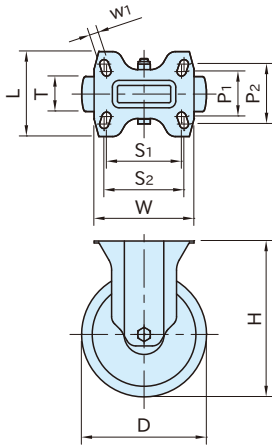


CAF8-SBF
(Swivel Bracket with Brake)

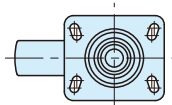


CAF8-FBL
(Swivel Bracket with Through Hole)

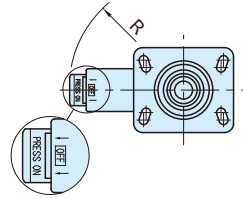
Type	Wheel Covering / Wheel	Bearing	Bracket
CAF8	Polyamide White	Steel (Tube)	Steel Zinc plated
CAF8-SUS		Zinc plated	Stainless steel (SUS304)



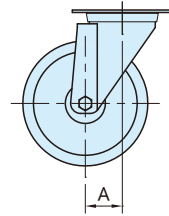
CAF8-PBL **CAF8-PBL-SUS**
(Fixed Bracket)



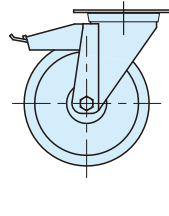
CAF8-SBL **CAF8-SBL-SUS**
(Swivel Bracket)



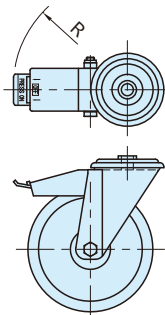
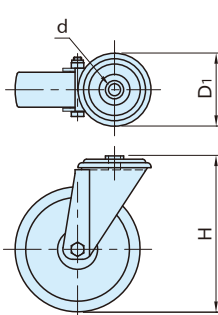
CAF8-SBF **CAF8-SBF-SUS**
(Swivel Bracket with Brake)



CAF8-FBL **CAF8-FBL-SUS**
(Swivel Bracket with Through Hole)



CAF8-FBF **CAF8-FBF-SUS**
(Swivel Bracket with Through Hole & Brake)



CAF8-PBL CAF8-PBL-SUS (Fixed Bracket)

Steel		Stainless Steel		D	T	H	w ₁	S ₁	P ₁	S ₂	P ₂	W	L	Load Capacity(N)
Part Number	Weight(g)	Part Number	Weight(g)											
CAF8-065PBL	370	–	–	65	100									1,200
CAF8-080PBL	390	CAF8-080PBL-SUS	290	80	30	107	9	75	45	80	60	100	85	1,800
CAF8-100PBL	460	CAF8-100PBL-SUS	360	100	128	2,000								
CAF8-125PBL	640	CAF8-125PBL-SUS	630	125	38	156								2,200
CAF8-150PBL	1,450	–	–	150	45	194								11

CAF8-SBL CAF8-SBL-SUS (Swivel Bracket)

Steel		Stainless Steel		D	T	H	w ₁	S ₁	P ₁	S ₂	P ₂	W	L	A	Load Capacity(N)
Part Number	Weight(g)	Part Number	Weight(g)												
CAF8-065SBL	570	–	–	65	100									39	1,200
CAF8-080SBL	580	CAF8-080SBL-SUS	550	80	30	107	9	75	45	80	60	100	85	35	1,800
CAF8-100SBL	650	CAF8-100SBL-SUS	610	100	128	2,000									
CAF8-125SBL	890	CAF8-125SBL-SUS	780	125	38	156								37	2,200
CAF8-150SBL	1,770	–	–	150	45	194								11	105

CAF8-SBF CAF8-SBF-SUS (Swivel Bracket with Brake)

Steel		Stainless Steel		D	T	H	w ₁	S ₁	P ₁	S ₂	P ₂	W	L	A	R*)	Load Capacity(N)
Part Number	Weight(g)	Part Number	Weight(g)													
CAF8-080SBF	780	CAF8-080SBF-SUS	730	80	30	107	9	75	45	80	60	100	85	39	120	1,800
CAF8-100SBF	850	CAF8-100SBF-SUS	760	100	128	35								2,000		
CAF8-125SBF	1,040	CAF8-125SBF-SUS	950	125	38	156								37	2,200	
CAF8-150SBF	1,990	–	–	150	45	194								11	105	73

*) Distance required to avoid interference.

CAF8-FBL CAF8-FBL-SUS (Swivel Bracket with Through Hole)

Steel		Stainless Steel		D	T	H	d	D ₁	A	Load Capacity(N)
Part Number	Weight(g)	Part Number	Weight(g)							
CAF8-065FBL	520	–	–	65	100					1,200
CAF8-080FBL	535	CAF8-080FBL-SUS	500	80	30	107	For M12 screw	73	39	1,800
CAF8-100FBL	555	CAF8-100FBL-SUS	610	100	128	35			2,000	
CAF8-125FBL	850	CAF8-125FBL-SUS	790	125	38	156			37	2,200
CAF8-150FBL	1,570	–	–	150	45	188			For M20 screw	102

CAF8-FBF CAF8-FBF-SUS (Swivel Bracket with Through Hole & Brake)

Steel		Stainless Steel		D	T	H	d	D ₁	A	R*)	Load Capacity(N)
Part Number	Weight(g)	Part Number	Weight(g)								
CAF8-080FBF	700	CAF8-080FBF-SUS	520	80	30	107	For M12 screw	73	39	120	1,800
CAF8-100FBF	800	CAF8-100FBF-SUS	760	100	128	35			2,000		
CAF8-125FBF	990	CAF8-125FBF-SUS	930	125	38	156			37	2,200	
CAF8-150FBF	1,860	–	–	150	45	188			For M20 screw	102	56

*) Distance required to avoid interference.

Feature :

The brake simultaneously stops the swivel of the bracket's turning plate and the rotation of the wheel

Reference

The instructions for choice and use of castors.