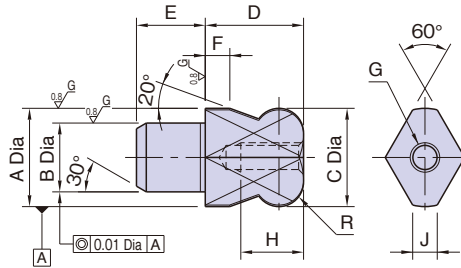


BJ793

DIAMOND LOCATING PINS



Material : SK95 steel
Heat Treat : Quenched and tempered
Precision ground



Part Number	A (g6)	B (n6)	C (-0.015)	D	E	F	G	H	J	R	Weight (g)
BJ793-10001	10	7	10	10	7	2.5	M3x0.5	6	2.5	R2.5	5
BJ793-12001	12	8	12	12	8	3	M4x0.7	8		R3	8
BJ793-16001	16	12	16	16	12	4	M5x0.8	10	4.3	R4	23

Features:

The round head of these pins facilitates setting a workpiece.

Use NKL Pin Extractors to pull out these pins.

How To Use

