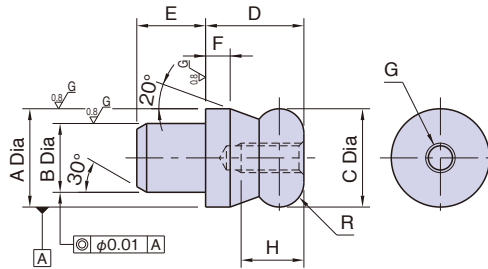


# BJ791

## ROUND LOCATING PINS



Material : SK95 steel

Heat Treat : Quenched and tempered

Precision ground

Part Number	A (g6)	B (n6)	C ( $-0.01$ $-0.05$ )	D	E	F	G	H	R	Weight (g)
<b>BJ791-10001</b>	10	7	10	10	7	2.5	M3x0.5	6	R2.5	7
<b>BJ791-12001</b>	12	8	12	12	8	3	M4x0.7	8	R3	11
<b>BJ791-16001</b>	16	12	16	16	12	4	M5x0.8	10	R4	30

### Features:

The round head of these pins facilitates setting a workpiece.

Use NKL Pin Extractors to pull out these pins.

### How To Use

