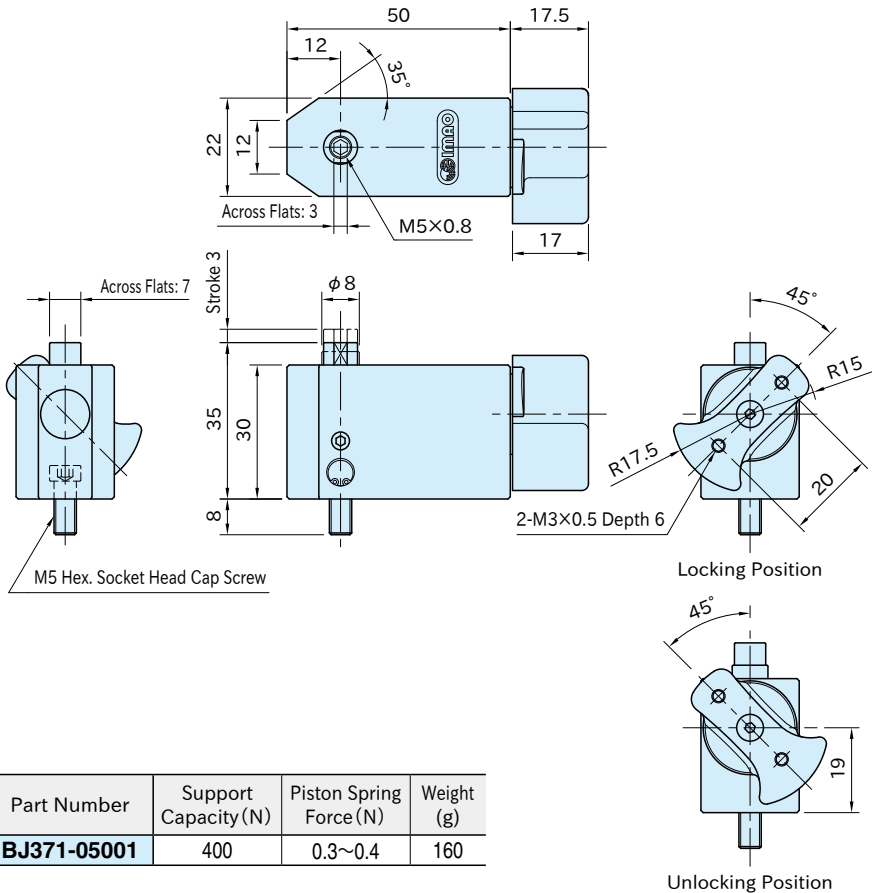


BJ371

PRECISION WORK SUPPORT



Body	Piston	Locking Shaft	Knob
A5052 aluminum Anodized	SK95 steel Quenched & tempered Black oxide finished	S45C steel Electroless nickel plated	SUS303 stainless steel



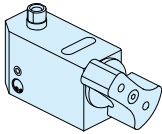
Part Number	Support Capacity (N)	Piston Spring Force (N)	Weight (g)
BJ371-05001	400	0.3~0.4	160

Feature

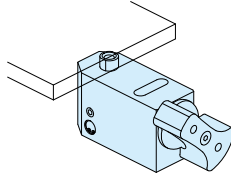
- The piston can be locked/unlocked with one-touch operation and keeps stable support capacity.
- The displacement of the piston is not exceeding $3\ \mu\text{m}$ when it is locked. This helps keep the accuracy of the workpiece height.
- Can be used by remote control.

How To Use

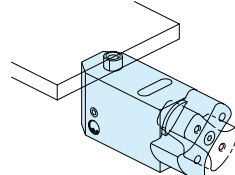
■ Operating Instruction



1. No workpiece loaded.



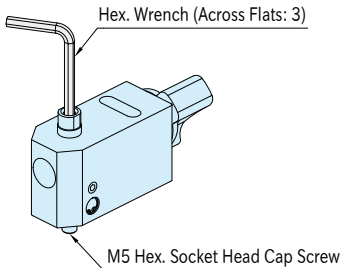
2. Load a workpiece, and the piston lowers.



3. Lock the piston by turning the knob.

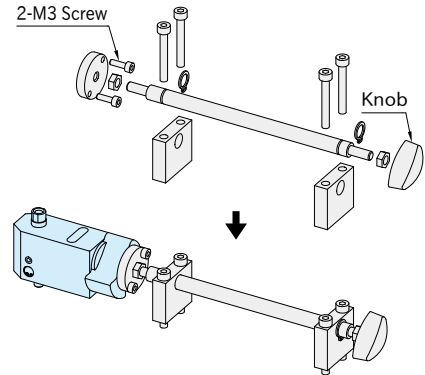
■ Installation Instruction

Tighten the M5 hex. socket head cap screw with a hex. wrench (Across Flats: 3).



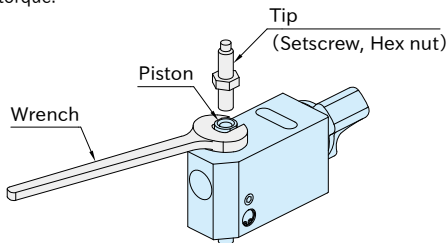
■ Application Example for Remote Control

Components for remote control are not available from us.



■ Note

- When installing a tip on the piston, lock the piston using a wrench to prevent it from receiving any torque.



- In machining applications, use clean coolant without sludge to prevent trouble.