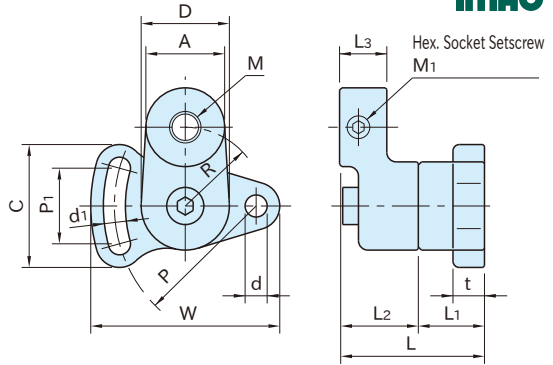


BAT-A

VERTICAL SLOTTED TIGHTENERS



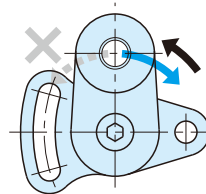
Part Number	Body	Arm	Locking Element
BAT45A	Cast iron (FCD450) Powder baking finish Black	Steel (S50C) Powder baking finish Black	S50C
BAT90A	Cast iron (FC250) Powder baking finish Black	Cast iron (FCD450) Powder baking finish Black	S45C

Part Number	No. of Teeth	M	A	R	W	C	d	d ₁	P	P ₁	D	L ₂	L ₃	M ₁
BAT45A	15	M10×1.5	25	25	60	39	7.5	7	45	24	28	25	15	M5×0.8 - 6L
BAT90A	24	M20×2.5	50	55	117.5	70	12	11	90	40	55	46	28	M8×1.25-14L

Part Number	Max. Swing Angle	Max. Tension	L	t	L ₁	Weight (g)
BAT45A	70°	45.8	46	10	21	290
BAT90A	60°	145	85	15	39	1,900

Notes

- Initial tension is "0"N.
- Do not apply a counterclockwise force to the arm when it is engaged with the locking element, to avoid possible damage to the return spring.



Clockwise force applied to the arm allows generating tension (max. torsion angle and max. tension must be considered in installation).