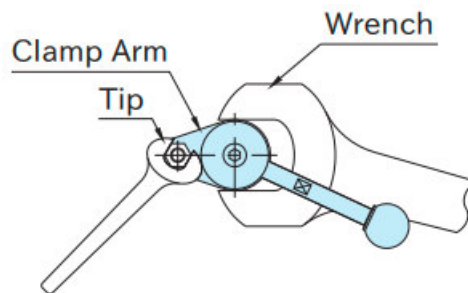


# SWING CLAMPS (Standard) [QLSW] INSTRUCTIONS

## ■ Tip Installation

When installing a tip on the clamp arm, lock the clamp arm using a wrench to prevent the clamp from receiving any torque.



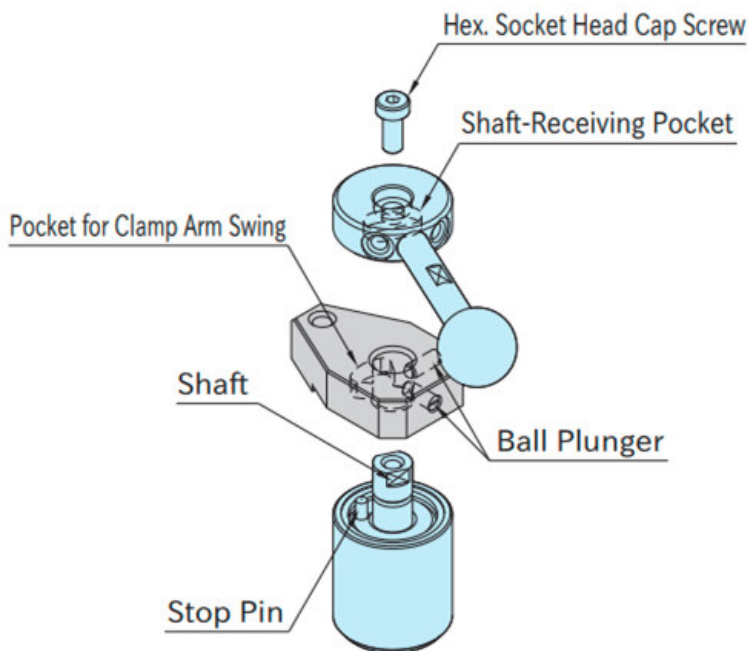
## ■ Installation / Removal

To install a clamp arm,

1. Fit it onto the shaft getting the stop pin received in the stop-pin slot provided on the clamp-arm bottom.
2. Place the adaptor head onto the shaft getting the shaft fitted into the shaft-receiving pocket in the adaptor head, and then lock the adaptor head using a hex. socket head cap screw.

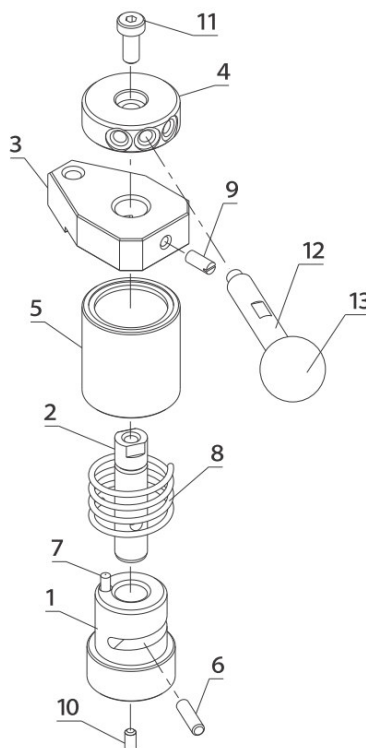
NOTE : Tighten the hex socket head cap screw using the torque marked on the adaptor head.

3. Tighten the ball plungers inside the clamp arm.  
 To remove the clamp arm, follow the above steps back.



## Parts Breakdown for Maintenance Purposes

- 1 : Body .....1
- 2 : Shaft .....1
- 3 : Clamp Strap.....1
- 4 : Adaptor Head .....1
- 5 : Cover .....1
- 6 : Guide Pin .....1
- 7 : Stop Pin .....1
- 8 : Helical Compression Spring••1
- 9 : Ball Plunger .....2
- 10 : Hex. Socket Setscrew ••1
- 11 : Hex. Socket Head Cap Screw ••1
- 12 : Handle .....1
- 13 : Ball Knob.....1



**IMAO CORPORATION**

**[CONTACT US]**

Export Sales Team

<https://www.imao.com/en/contact-us/>