

NUTRUNNER SWING CLAMPS INSTRUCTIONS [PTSW3]

How To Change Clamp Arm

① Removal

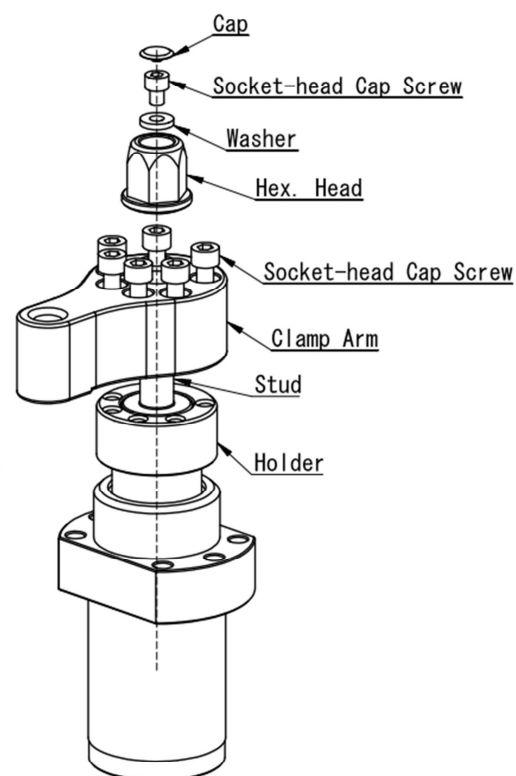
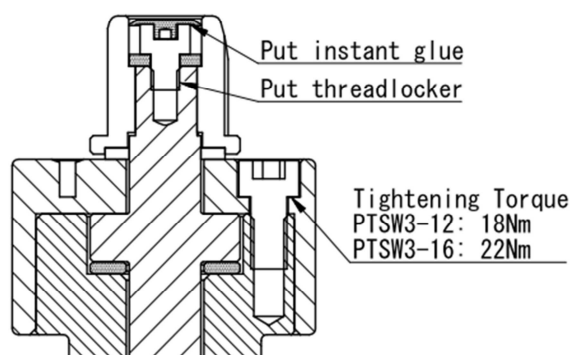
1. Remove the glued cap with a flathead screwdriver.
2. Remove the socket-head cap screw.
3. Dismount the washer and the hex. head.
4. Loosen the socket-head cap screw (6 pcs).
5. Remove the clamp arm.

② Installation

1. Fix the clamp arm on the holder with the socket-head cap screw (6 pcs).

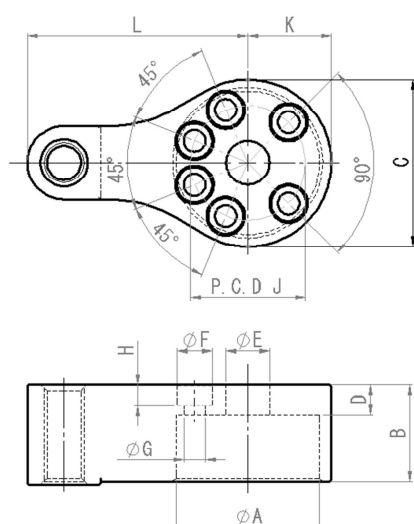
Tightening torque should be 18Nm for PTSW3-12, 22Nm for PTSW3-16.

2. Mount the hex. head.
3. Insert the washer into the hex. head.
4. Put threadlocker (Loctite 243) on the socket-head cap screw and tighten it.
5. Put instant glue on the bottom of the cap and install it.



③ Custom Clamp Arm

Keep the following dimensions when making a custom clamp arm.



Series	A (E9)	B	C	D (±0.1)	E	F	G	H	J	K	L
PTSW3-12	43	29	50	9	13	10.5	6.5	6.2	34.5	25	66
PTSW3-16	52	34	60	11	17	13.5	8.5	8.2	42	30	79

IMAO CORPORATION

[CONTACT US]

Export Sales Team

<https://www.imao.com/en/contact-us/>