

## NUTRUNNER SWING CLAMPS INSTRUCTIONS [PTSW2]

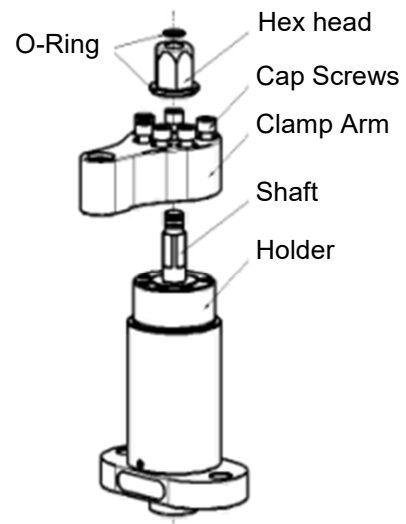
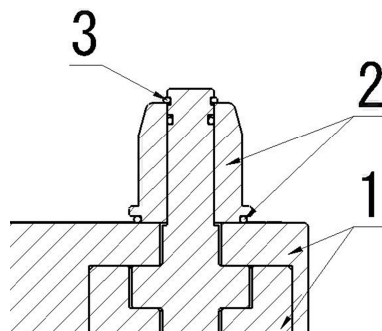
### How To Change Clamp Arms

#### ● Installation / Removal

To install, follow the steps given below.

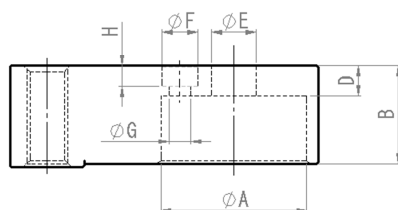
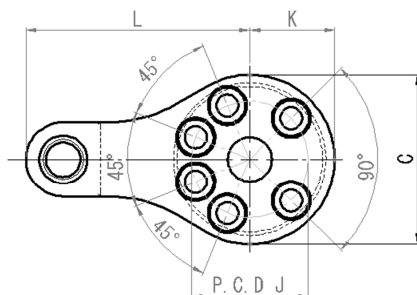
1. Mount the clamp arm to the holder using socket-head cap screws.  
Screw torques to be used for tightening are;  
- 18N·m for PTSW2-12 design (cap screw size:M6x1-12L)
2. Set the larger O-ring(S20) on the bottom of the flange nut and slide the flange nut over the shaft.
3. Set the smaller O-ring(S8) in the groove provided at the top of the shaft.

To remove, follow the above steps back.



#### ● Custom Clamp Arms

Your own clamp arms should be made to the dimensions given below.



Series	A (E9)	B	C	D ( $\pm 0.1$ )	E	F	G	H	J	K	L
PTSW2-12	43	29	50	9	13	10.5	6.5	6.2	34.5	25	66

IMAO CORPORATION

[CONTACT US]

Export Sales Team

<https://www.imao.com/en/contact-us/>