

SWING CLAMPS (QUICK-ACTING) INSTRUCTIONS [PTSW1]

How To Change Clamp Arms

● Installation / Removal

To install, follow the steps given below.

1. Ensure that four conical spring washers are set as shown below.
2. Mount the clamp arm to the holder using socket-head cap screws.

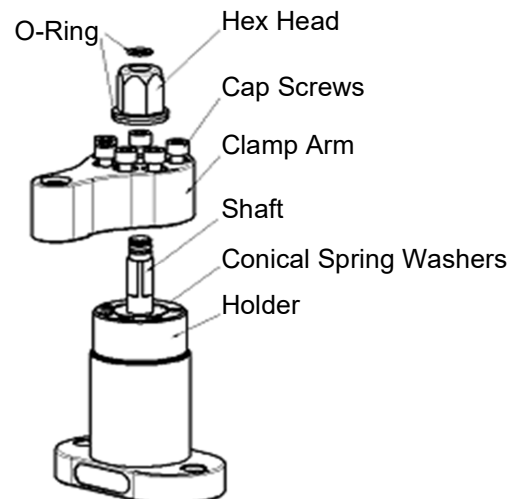
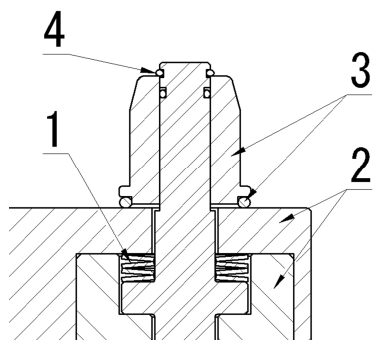
Screw torques to be used for tightening are;

- 18N·m for PTSW1-12 design (cap screw size:M6x1-12L)

3. Set the larger O-ring(P21) on the bottom of the flange nut and slide the flange nut over the shaft.

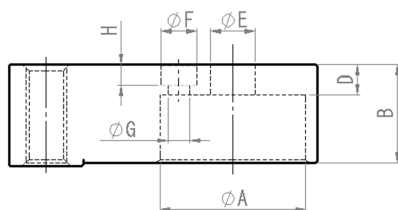
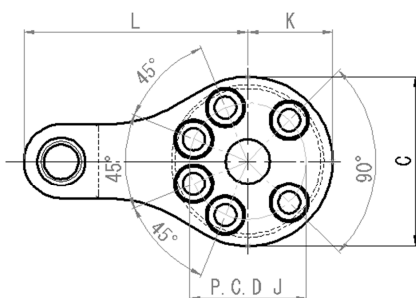
4. Set the smaller O-ring(S8) in the groove provided at the top of the shaft.

To remove, follow the above steps back.



● Custom Clamp Arms

Your own clamp arms should be made to the dimensions given below.



Series	A (E9)	B	C	D (±0.1)	E	F	G	H	J	K	L
PTSW1-12	43	29	50	9	13	10.5	6.5	6.2	34.5	25	66

IMAO CORPORATION

[CONTACT US]

Export Sales Team

<https://www.imao.com/en/contact-us/>