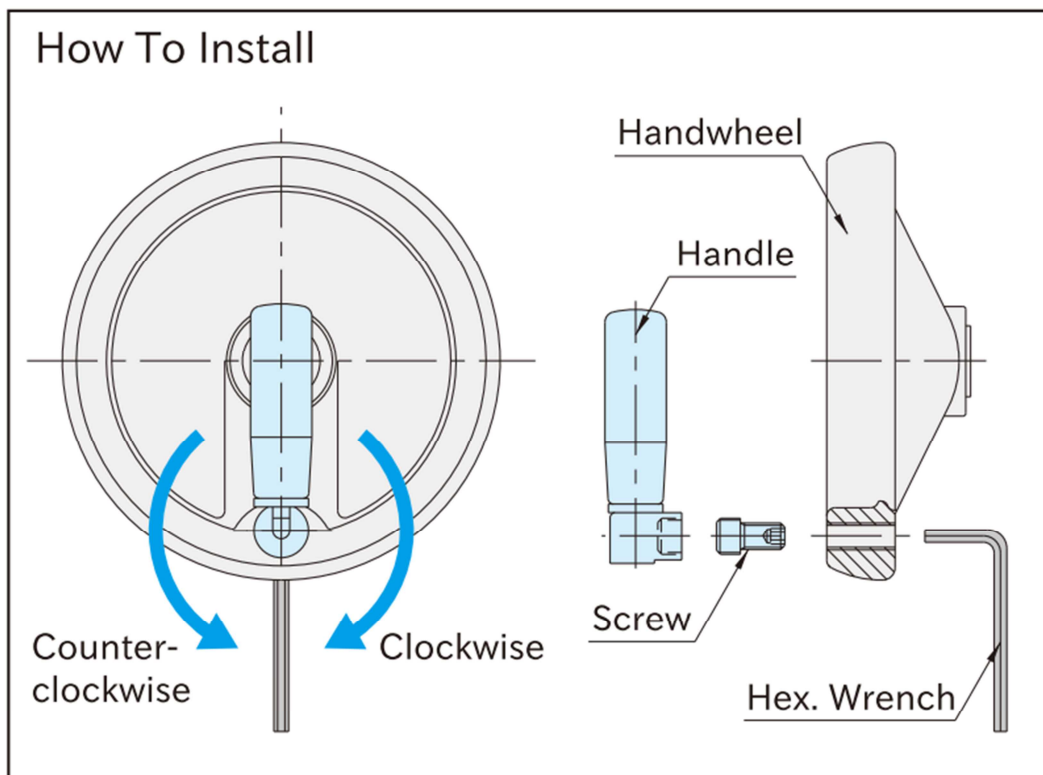


PLASTIC FOLDAWAY REVOLVING HANDLES [FR] INSTRUCTIONS



- 1 Tighten the screw loosely into the handwheel in the clockwise direction until it is in a fully engaged position.
- 2 Insert a hex. wrench from the bottom into the screw and give it a 360° turn in the counterclockwise (loosening) direction.
- 3 Lock the screw using the hex. wrench and tighten the handle fully onto the screw in the counterclockwise direction.
- 4 Keep the screw locked using the hex. wrench and give the handle a 360° turn in the clockwise direction.
- 5 Keep the screw locked using the hex. wrench and turn the handle to a desired position in the clockwise direction.
- 6 Keep the handle locked and turn the hex. wrench in the clockwise direction to tighten the screw.

Note : It is recommended that the folding section be greased periodically.